



CITY OF
BAINBRIDGE ISLAND

Greenhouse Gas Emissions Inventory

Winter Planners Forum

February 27, 2020



NAVIGATE BAINBRIDGE

charting our future together



Comprehensive Plan

Guiding Principle #7 Reduce greenhouse gas emissions
and increase the Island's climate resilience.

Comprehensive Plan

Climate Change Advisory Committee - Who

Experts living on Bainbridge Island who are regarded as qualified scientific experts

Advisory body to implement the Guiding Policies and other policies related to climate change within the Comprehensive Plan.

Technical and planning advisory committee to the city council, city manager, and department of planning and community development staff on issues related to climate change

Climate Change Advisory Committee - Purpose

Provide advice on methods of completing a baseline island-wide greenhouse gas (“GHG”) inventory for the city.

Assist with the completion of a baseline island-wide GHG inventory.

Provide advice related to city GHG emission reduction targets.

Recommend to the city council a city climate action plan and implementation strategy.

Provide advice on how to measure progress toward meeting the city’s GHG emissions reduction targets and adaptation actions.

As directed by the city council, assist the city with participation in regional climate change efforts.

Provide education and outreach regarding climate change and the work of the committee and the city relating to climate change.



CITY OF BAINBRIDGE ISLAND GREENHOUSE GAS EMISSIONS INVENTORY

FINAL FINDINGS REPORT

2019

CASCADIA CONSULTING GROUP, INC.



Greenhouse Gas Emissions Inventory Report

The report includes three distinct inventories:

- A **community inventory** that estimates GHG emissions produced by activities of the Bainbridge Island community, including residents and businesses.
- A **municipal inventory** that accounts for the GHG emissions resulting from City of Bainbridge Island government operations.
- A **consumption-based inventory** that estimates GHG emissions associated with the *consumption* of food, goods, and services within the community, regardless of their origin.

External consultant – Cascadia Consulting

Cost - \$52,000 to Cascadia + significant staff time

Duration – January – December 2019

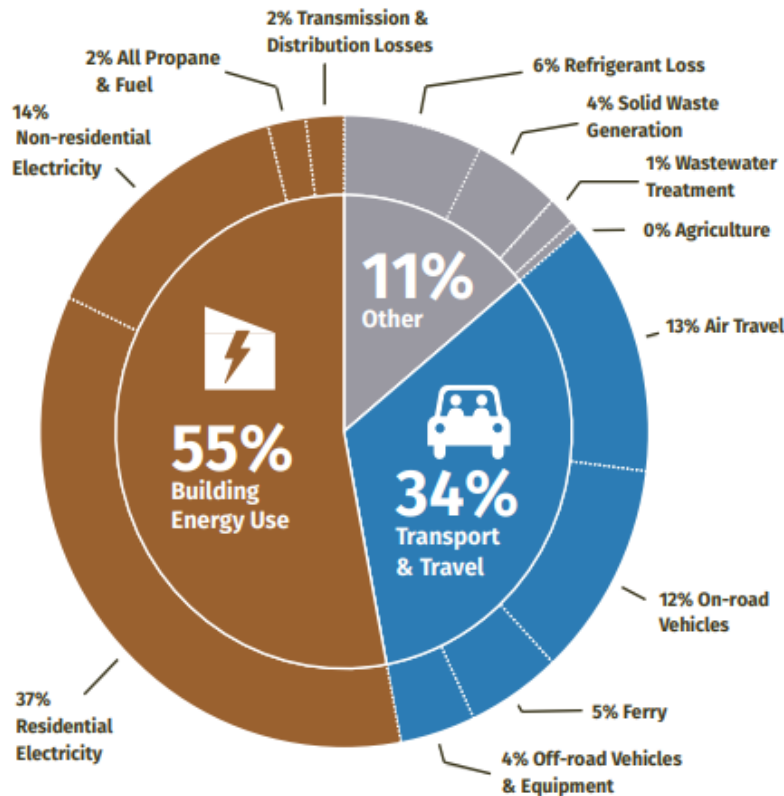
INVENTORY RESULTS



CITY OF
BAINBRIDGE ISLAND

Community Overall Emissions

233,998 MTCO₂e



The Bainbridge Island community emitted an estimated 233,998 MTCO₂e in 2018.

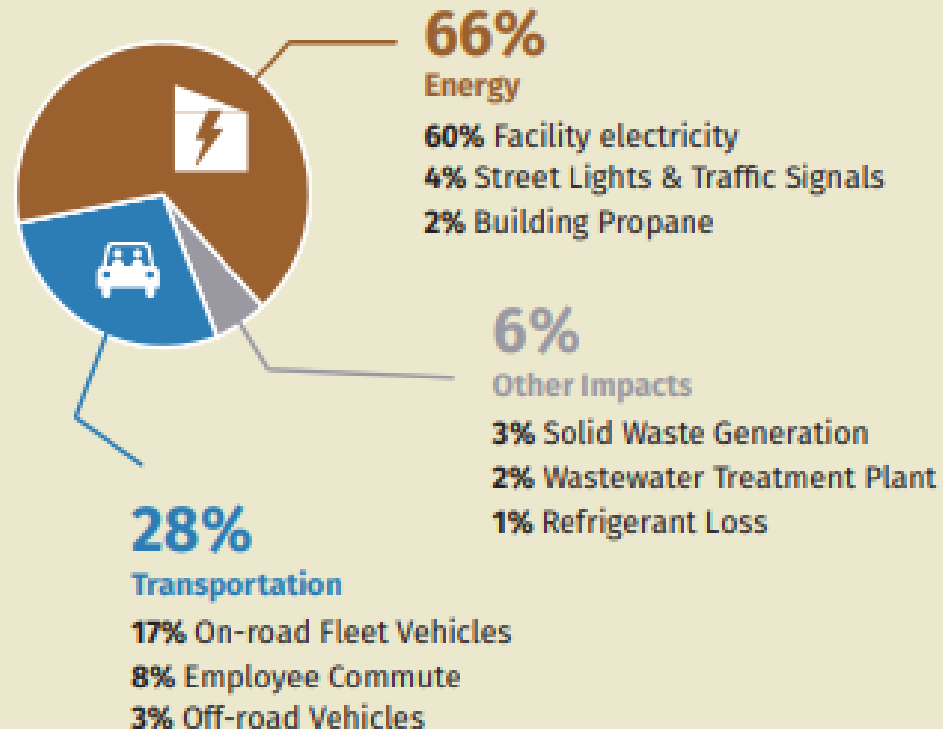
That equates to 9.4 MTCO₂e per person—equivalent to the emissions from driving 50,000 passenger vehicles for a year!

The majority of those emissions are from consumption of energy in homes and commercial buildings.

City Government Emissions

2,291 MTCO₂e in 2018

Emissions from City of Bainbridge Island activities—which only make up about 1% of the total community emissions—are largely from energy needed to power municipal buildings, equipment, and vehicles.



City
Council's
Top
Priorities
for 2020

Climate Change

- Climate Action Plan
- Sustainable Transportation Plan
- Green Building Policies

Affordable Housing

Groundwater Management Plan

2021-2022 Budget and Capital Plans

Thanks!



Ellen Schroer, MPA

Deputy City Manager

Executive Department

206.780.8619 *direct* / 206.842.2545 *main* / 206.786.9650 *cell*

eschroer@bainbridgewa.gov