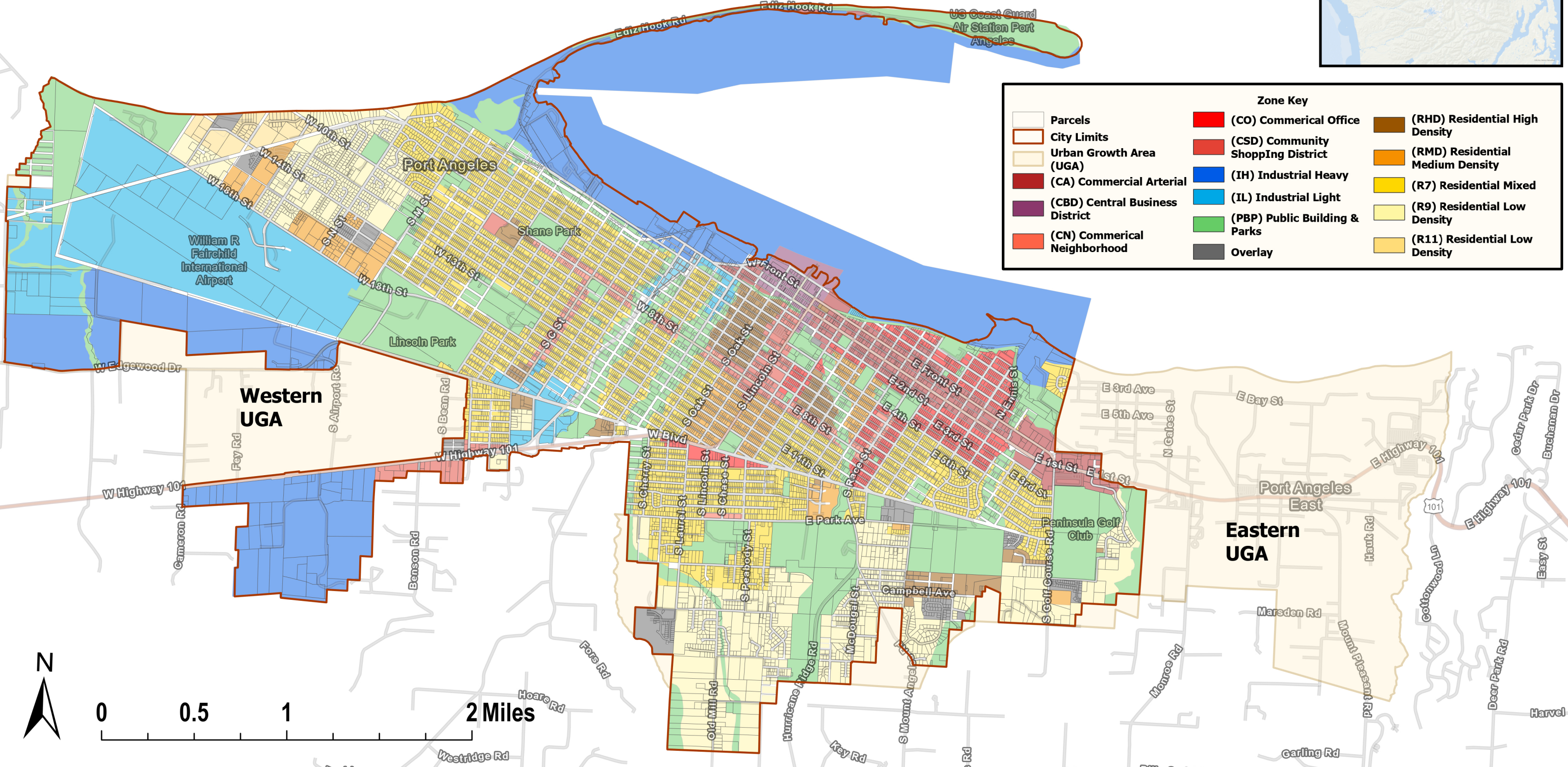
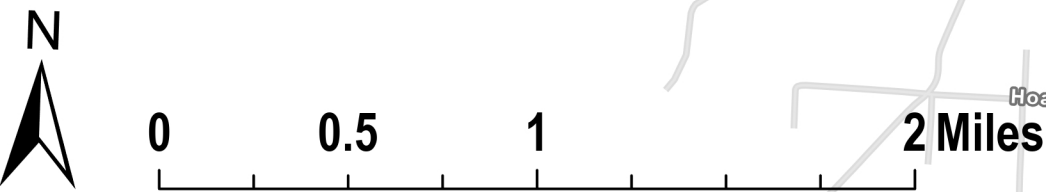


EXHIBIT B: AMENDED ZONING MAP OF THE CITY OF PORT ANGELES, WA

Adopted by the City Council of the City of Port Angeles on December 16, 2025.



Zone Key		
Parcels	(CO) Commercial Office	(RHD) Residential High Density
City Limits	(CSD) Community Shopping District	(RMD) Residential Medium Density
Urban Growth Area (UGA)	(IH) Industrial Heavy	(R7) Residential Mixed
(CA) Commercial Arterial	(IL) Industrial Light	(R9) Residential Low Density
(CBD) Central Business District	(PBP) Public Building & Parks	(R11) Residential Low Density
(CN) Commercial Neighborhood	Overlay	



The Zoning Map consists of Ordinance 1709 and subsequent ordinances: 2933, 2943, 2945, 2971, 2976, 2983, 2948, 2996, 3001, 3025, 3043, 3058, 3074, 3091, 3094, 3114, 3120, 3134, 3502, 3553, 3611, 3612, 3759. Originally adopted December 17, 1970.

Data Created: 16DEC2025 ;Software: ArcPro 3.5; Projected Coordinate System: 'NAD 1983 HARN State Plane Washington North FIPS 4602 Feet'; Credit: City of Port Angeles (COPA) Department of Community and Economic Development, COPA GIS, MAKERS Architecture & Urban Design, COPA Partners, and Community Stakeholders; Sources: City of Port Angeles, GIS; Clallam County GIS; State of Washington Sources: Esri, TomTom, Garmin, FAO, NOAA, USGS, (c) OpenStreetMap contributors, and the GIS User Community