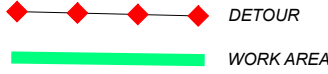


NOTES:

This TCP is for the detour of Race St during grinding and paving. This TCP should NOT have to be implemented all at once. As the paving operation moves, the needed area will be closed and the previous area will be opened. All side roads will be blocked with TCDs as needed. Flaggers will be on either end and follow, as needed.

CLASS A SIGNS ARE CURRENTLY UP IN ALL DIRECTIONS OF WORK ZONE

SEE SHEET TC A FOR SIGN AND DEVICE SPACING, TAPER AND BUFFER LENGTHS



RACE ST CLOSED AHEAD
FOLLOW DETOUR
(PCMS)
PLACED 1/4 MILE PRIOR TO RWA ON RACE ST

RACE ST CLOSED AHEAD
FOLLOW DETOUR
(PCMS)
PLACED 1/4 MILE PRIOR TO RWA ON RACE ST

ROAD CLOSED LOCAL TRAFFIC ONLY

INTERWEST CONSTRUCTION

