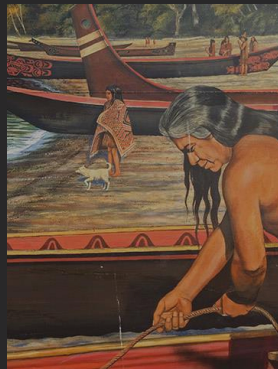
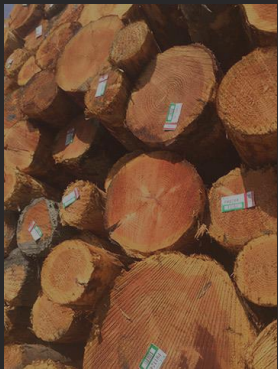




City of Port Angeles

Comprehensive Plan

-2023



This page is left intentionally blank

DRAFT

Acknowledgements

2019-2023

Amendment

The following citizen volunteers, past and present elected officials and staff are acknowledged for their various contributions to the 2019-2023 amendment of this Comprehensive Plan, last updated in ~~2016~~2019 and last periodically updated in 2016. These individuals contributed hundreds of hours to a citizen participation process, striving to reflect the wishes of the community in this long-range plan. Everyone's efforts have made this planning effort a success and are greatly appreciated.

2023 City Council Members

<u>Kate Dexter, Mayor</u>	<u>Charlie McCaughan</u>
<u>Brendan Meyer, Deputy Mayor</u>	<u>LaTrisha Suggs</u>
<u>Navarra Carr</u>	<u>Lindsey Schromen-Wawrin</u>
<u>Amy Miller</u>	

2023 Planning Commission Members

<u>Benjamin Stanley, Chair</u>	<u>Marolee Smith</u>
<u>Andrew Schwab, Vice Chair</u>	<u>James Taylor</u>
<u>Richie Ahuja</u>	<u>Colin Young</u>
<u>Tammy Dziadek</u>	

2023 Staff

Nathan West, City Manager
Calvin Goings, Assistant City Manager and Director of Community Services
Shannen Cartmel, Deputy Director of Community Services and Planning Manager
Ben Braudrick, Principal Planner
Zach Trevino, Assistant Planner

2019 City Council Members

Sissi Bruch, Mayor	Michael Merideth
Kate Dexter, Deputy Mayor	Jim Moran
Mike French	Lindsey Schromen-Wawrin
Cherie Kidd	

2019 Planning Commission Members

Andrew Schwab	Amy Powell
Benjamin Stanley	Mel Messineo
Steve Hopkins	Pamela Hastings
Duane Morris	Tara Lopez

2019 Staff

Nathan West, City Manager	Ben Braudrick, Assistant Planner
Allyson Brekke, DCED Director	Kevin Bagwell, Planning Technician

2016 City Council Members

Patrick Downie, Mayor	Michael Merideth
Cherie Kidd, Deputy Mayor	Lee Whetham
Brad Collins	Sissi Bruch
Dan Gase	

2016 Planning Commission Members

Andrew Schwab	Elwyn Gee
Brian Hunter	John Mathews
Chad Aubin	Matt Bailey
Duane Morris	

2016 Staff

Dan McKeen, City Manager	Craig Fulton, Public Works Director
Nathan West, DCED Director	Byron Olson, Finance Director
Ben Braudrick, Assistant Planner	Scott Johns, Associate Planner

Consultants: Studio Cascade Inc., Spokane WA

Minor amendments are made to the Comprehensive Plan on an annual basis.

City Clerk Certification

The Planning Commission recommended adoption of this Comprehensive Plan Amendment on May ~~XX22~~, 2019-2023 to be adopted by the City Council Ordinance # ~~3621~~

[insert Ordinance adopting the amended Comprehensive Plan here] |

Commented [ZT1]: Replace with anticipated ordinance adopting 2023 amendment.

DRAFT

This page is intentionally left blank

DRAFT

Table of Contents

DRAFT

Chapter 1 - Introduction

Foundation of City Policy..... 1•1
GMA Compliance..... 1•1
Purpose of the Comprehensive Plan 1•2
Compliance with the Comprehensive Plan 1•3
Plan Development & Public Participation 1•4
Organization & Requirements of the Comprehensive Plan 1•4
Use of the Comprehensive Plan..... 1•8
Community Vision 1•9
City Actions Since the 2004 Update 1•13

Chapter 2 - Growth Management

General Comments..... 2•2
GMA Goals & Policies 2•3

Chapter 3 - Land Use

General Comments..... 3•1
Land Use Categories 3•2
 Future Land Use Map (Figure 3.01)..... 3•5
Land Use Map Goals & Policies 3•7
Residential Goals & Policies 3•7
Commercial Goals & Policies 3•8
Industrial Goals & Policies 3•10
Open Space Goals & Policies 3•11

Chapter 4 - Transportation

General Comments..... 4•1
Transportation Goals & Policies 4•2

Chapter 5 - Utilities & Public Services

General Comments..... 5•1
Utilities Goals & Policies 5•2

Chapter 6 - Housing

General Comments..... 6•1
Housing Goals & Policies 6•2



Chapter 7 - Conservation

General Comments.....7•1
Conservation Goals & Policies.....7•2

Chapter 8 - Capital Facilities

General Comments.....8•1
Capital Facilities Goals & Policies.....8•3

Chapter 9 - Economic Development

General Comments.....9•1
Economic Development Goals & Policies.....9•2

Chapter 10 - Parks & Recreation

General Comments.....10•1
Parks & Recreation Goals & Policies.....10•2

Chapter 11 - Implementation

General Comments.....11•1
Objectives Table (Table 11.01).....11•3

Appendix A - Community Profile

(See Appendix Table of Contents for listing)

Appendix B - Definitions

(See Appendix Table of Contents for listing)

Appendix C - GMA Requirements

(See Appendix Table of Contents for listing)

Appendix D - Transportation Analysis

(See Appendix Table of Contents for listing)

Appendix E - City-Wide Performance Measures

(See Appendix Table of Contents for listing)

Appendix F - Comprehensive Plan Related Documents

(See Appendix Table of Contents for listing)



Introduction

1

Foundation of City Policy

The comprehensive plan is the policy foundation for the City; it sets fundamental goals, policies, and objectives that are the basis for all action. The City's budget, Capital Facilities Plan, work plan, transportation plan, and departmental performance standards are all based on and are consistent with comprehensive plan policy. The City's strategic plan also ties back to the comprehensive plan, specifically addressing how the City will implement comprehensive plan objectives over the next two years, establishing priorities for action.

GMA Compliance

In 1990, the Washington State Legislature enacted the State Growth Management Act (GMA), which requires all cities and counties subject to the Act to develop and adopt comprehensive plans and implementing ordinances that will regulate and guide future growth and development. In accordance with the Act, each county must also establish independent Urban Growth Areas ~~capable of~~ capable of containing future growth for the next 20 years. To ensure compatibility between various comprehensive plans, the cities, county, and other

affected agencies cooperatively developed a set of county-wide planning policies to guide this process.

To ensure orderly development, the City of Port Angeles agreed to work with Clallam County in the development of comprehensive plan goals and policies for the Port Angeles Urban Growth Area (UGA).

The Port Angeles Comprehensive Plan has been developed and periodically updated to meet the requirements of the GMA and is consistent with the Clallam County-Wide Planning Policy.

This 2016 update was undertaken to meet the State's GMA requirements and included a process intended to capture comments and suggestions from the broadest range of the public.

Purpose of the Comprehensive Plan

A City's Comprehensive Plan acts as the guiding document for land use controls. All other city plans, ordinances, and regulations must be consistent with the goals, policies, and intent of the City's Comprehensive Plan.

If subordinate planning or regulations, such as the City's Zoning Ordinance or Capital Facility Plan, are not consistent with the goals and policies of the Comprehensive Plan, then those documents may be determined to be illegal and rendered invalid.

Prior to the passage of the State GMA, such compliance was considered desirable but actual consistency was not required. The GMA now makes such compliance a requirement.

The Comprehensive Plan is the basis upon which local governmental decisions are to be made. It sets forth the City's goals and policies and visualizes directions the City will take over the next two decades. The Comprehensive Plan Land Use Map illustrates the desired development pattern for the city.

It is, therefore, important that the Comprehensive Plan truly reflect the goals and desires of the community. In order for that to take place, it is vital that citizens take an active role in determining the quality, context, and vision incorporated within this Comprehensive Plan.





Figure 1.01 – The 2016 update process reviewed and updated this plan's vision, as well as many of its implementing policies and objectives. (Image: Studio Cascade, Inc.)

Compliance with the Comprehensive Plan

The Comprehensive Plan is the foundation upon which the City's development regulations (zoning, environmentally sensitive areas protection, parking and sign codes, and subdivision ordinances) and Urban Services Standards and Guidelines Manual, Capital Facilities Plan and Urban Services and Utilities Plans are based, and from which the City's future land use pattern will come.

A community is a diverse and heterogeneous grouping of people. Individually, each of us has a set of treasured values. Together, we give the community a set of shared values.

In a community, individual values often clash and indeed must confront each other if the shared values of the community are to develop. Good planning uncovers the values we share as a

community and uses the shared values to guide development of the Comprehensive Plan.

No plan can be expected to last for all time. Times change, conditions change, and what we value in our community changes. Even though this Comprehensive Plan is intended to cover a 20- year period, the State requires it to be reviewed at least every seven years and can be amended on an annual basis as necessary. This allows the City to adjust the Comprehensive Plan as conditions,



needs, and desires of the community change. Through the ongoing development of this Comprehensive Plan, the City of Port Angeles reaffirms that it is the rightful goal of the people of our community to take an active role, sharing the work and responsibility involved in determining the character, quality, and destiny of this community.

Plan Development & Public Participation

The Port Angeles Comprehensive Plan was initially updated from its 1976 version under the GMA in June of 1994. The City's last major update to the Comprehensive Plan was in 2016. Several minor amendments have been approved since that time. The 2016 updates reflected a citywide approach with an ambitious public participation program.

The 2016 update of the Comprehensive Plan was updated to meet the requirements of the GMA. Areas of the plan that were expanded to include handling of archaeological discoveries and sites, the inclusion of low-impact stormwater management methods that more closely mimic natural processes, increased emphasis on urban forestry and landscaping and consideration of issues surrounding climatic change.

The City of Port Angeles allows amendments to the Comprehensive Plan to occur on an annual basis, within limited time periods. The intent of this allowance is to address the community's ~~desire~~ to ~~adjust~~ zoning, which might also require a change in land use designation. Individual citizens or groups may propose Comprehensive Plan amendments during the ~~three-month~~ three-month period between January 1 and March 31 of each year. Proposed amendments require environmental review, consideration by the Planning Commission and opportunity for the public to participate, and a public hearing prior adoption by the City Council.

Organization & Requirements of the Comprehensive Plan

The Port Angeles Comprehensive Plan is organized with an (1) Introduction, (2) a series of required and included elements, and (3) various appendixes including community profile, definition section, the Capital Facilities Plan, Housing Needs Assessment,



and Environmental Impact Statement. Each element addresses a particular topic and contains a general comment section and multiple goals with various related policies and objectives. Some of the elements have an associated map or plan.

The Port Angeles Comprehensive Plan goals are expressed as broad statements of intent that will fulfill the vision of what the city intends to become or how the city should look or feel in the future. The goals in the Comprehensive Plan are supported by policy statements that usually include the word should. The policy statements are directive, and provide a basis for decision-making and establish a principal of wise management leading to achievement of a goal. Objectives are statements of specific actions that when taken will result in the realization of a goal.

The GMA requires that a comprehensive plan consist of a map or maps and descriptive text covering objectives, principles, and standards used to develop the comprehensive plan. The plan must also be an internally consistent document, with all elements made consistent with the Comprehensive Plan Land Use Map.

The Land Use Map is provided to show general uses to be located in generalized areas of the City. The plan shows six general land use categories: Low, Medium and High-Density Residential; and Commercial, Industrial, and Open Space. These general land use areas are not specifically bounded by streets, parcel lines, or other political boundaries. For purposes of this plan, they are separated by what is referred to as "imprecise margins." These, together with the land use categories, provide a framework and direction for desired development patterns, while at the same time, allow for flexibility in applying zoning designations.

The GMA requires that comprehensive plans include a plan, scheme, or design for each of the following:

- Land Use Element
- Transportation Element
- Utilities Element
- Housing Element
- Capital Facilities Plan Element.

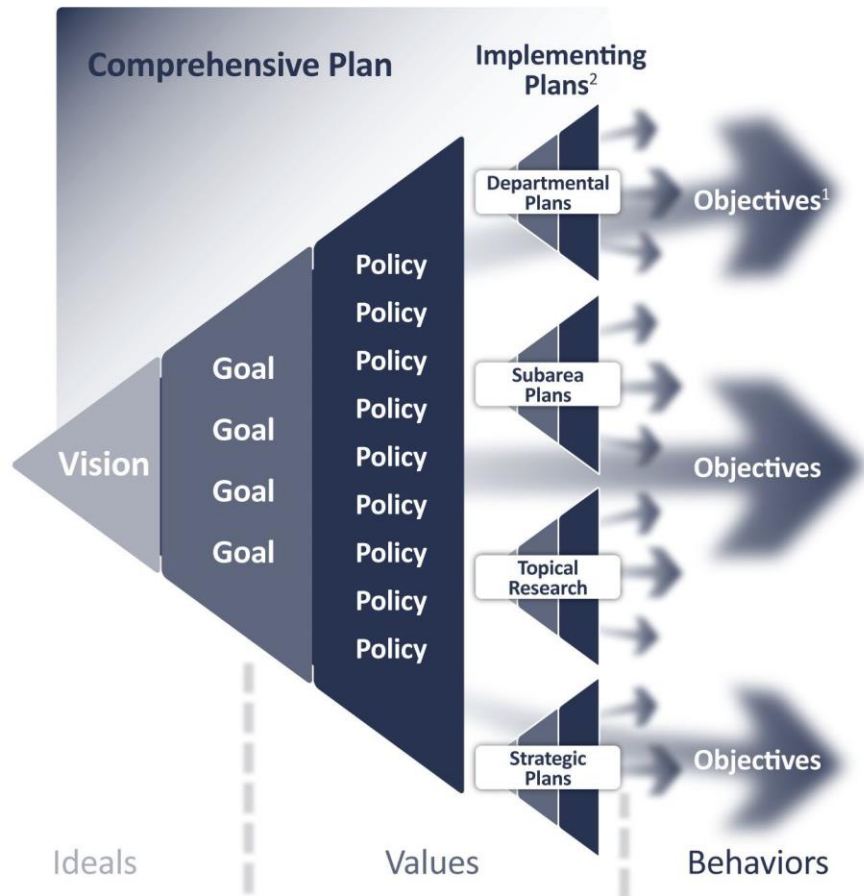
Additionally, comprehensive plans must contain a process for identifying and siting Essential Public Facilities.



This plan contains each of the required elements as well as four additional optional elements: A Conservation Element, an Economic Development Element, a Growth Management Element and a Parks & Recreation Element. Each of the elements have been developed to be consistent with the GMA and to reflect the needs and desires of the City of Port Angeles and its citizens. Detailed minimum requirements for GMA-required elements are provided in Appendix C.

DRAFT





¹ Objectives include programs, capital investments, regulations, etc.
² Examples only. Implementing plans may include a wide variety of plan types

Figure 1.02 – Comprehensive plans are organized as tiered systems, expressing community desires from broad-brush ideals (vision) through specific action items the City can lead (objectives). Other types of plans are sometimes prepared to identify or help implement objectives, taking vision, goal and policy cues from the comprehensive plan. (Image: Studio Cascade, Inc.)



Use of the Comprehensive Plan

The Comprehensive Plan is designed to be used by the public as a way for citizens to learn the long-range goals and policies of the City. It is also used as a foundation upon which City officials make land use and other decisions, and as a tool which City staff uses to ensure desirable development of the City. This document provides a sense of predictability to citizens of the city or potential residents considering relocating to Port Angeles.

The Plan's Environmental Impact Statement (EIS, Appendix A) is designed as a programmatic EIS and may be used as a phased reviewed environmental document for any plans, ordinances, programs, or development projects that are consistent with the goals and policies of the Comprehensive Plan. The EIS has been updated through addenda and regular State Environmental Policy Act (SEPA) review as amendments to the Comprehensive Plan have been periodically approved. Any project proposed in the City will have to show that it is consistent with the Comprehensive Plan. If it is not, it cannot be approved unless the Comprehensive Plan is amended and additional environmental review is completed.



Community Vision

The Comprehensive Plan public process with the 2016 mandated update resulted in the following vision statements for a variety of specific areas of interest to citizens, Vision statements are based on the anticipated conditions of Port Angeles in 2036.

The City of Port Angeles is vibrant and prospering, nurturing a balance of innovation and tradition to create an environmentally, economically, and fiscally sustainable community, accepting and cherishing its social diversity, small-town character and natural setting.

In achieving this vision, Port Angeles recognizes the important roles each of the following plays:



Environment

Port Angeles' natural setting – with the Strait to the north and the Olympics to the south – is unique, with creeks, wetlands, steep slopes and a weather pattern that can be demanding. The town balances the community's need for economic stability, its potential for growth and the preservation of the areas' natural systems.



Economic Development

Keeping the community employed, prosperous, educated, and well-served are key economic development objectives. The City of Port Angeles facilitates sustained economic growth, directing investment to revitalize activity downtown, support local employment, and keep public services affordable and of high quality.



Neighborhoods

Slightly more than 25,000 people call Port Angeles home in 2036, residing in neighborhoods that are safe, attractive and rich in character.



Airport

Fairchild International Airport is an important aviation resource for local residents and businesses, operating as an important economic development and community safety priority and with regular commercial service to SeaTac International Airport.





Downtown

Port Angeles' central business district is vital and prominent. The central commercial district is one of Port Angeles' major assets, intimately connected to the waterfront and featuring a variety of retail, civic, residential and professional office uses.



Small Commercial Centers

Small-scale commercial centers are located in areas convenient for nearby residents and workers, offering a modest array of goods and services within an easy, enjoyable walk from nearby homes and employment centers.



Waterfront

The central waterfront is an active and successful civic and social space, equally welcoming to residents and visitors.



Transportation

Port Angeles' transportation network moves people and goods to, through and within the community, harmoniously accommodating cars, bikes, trucks, public transportation, planes, boats, ferries, and travel by foot.



Community Services

The community's systems of housing, transportation, economic development and parks and recreation coordinate to serve all of Port Angeles' residents, ensuring public safety, economic opportunity, public health and overall community wellness.



Trails

Port Angeles' trail system builds on the Olympic Discovery Trail and miles of local trails, contributing to the local quality of life by inviting community residents and visitors of all ages to wander and explore.





Parks and Recreation

Leisure is an important contributor to quality of life, and Port Angeles is committed to provide a robust parks and recreation system in response. Open spaces, both constructed and natural, function to enliven the human spirit. Whether it's a small pocket park near downtown, a waterfront esplanade, a sculpture garden on the hill, or a vast sports complex, the system serves multiple community needs.



The American Institute of Architects Sustainable Design Assessment Team Report Vision

In 2009, the City of Port Angeles was inspired by the concept of bringing in individuals with an outside eye to review development trends and community issues. The City prepared a grant application to the American Institute of Architect's Center for Communities by Design focused on tourism and community development. The application sought a Sustainable Design Assessment Team (SDAT) to travel to Port Angeles. In March of that year five (5) team members engaged the community to learn more about local challenges and to present a series of resolutions to those issues. An intense three day planning exercise ended with thirty new recommendations for the community to pursue. Allured by the quality and respect given to the American Institute of Architects organization participation was widespread resulting in a high level of interest far beyond that of a typical planning process.

Community members filled Council chambers and anxiously sought follow up to the recommendations. The City made a commitment to move forward with recommendations. Specifically the City Council sub-committee known as the Port Angeles Forward Committee assisted in getting the low hanging fruit of the plan implemented. Instead of waiting for the final report, the Committee dissected the power point presentation from the final evening meeting of the SDAT process and developed a detailed list of each specified project. Within two weeks, 10 items were moved forward to City Council for implementation. Next the City promoted an additional public meeting for members of the public to publicly rank each of the SDAT team recommendations.



Immediate items included comprehensive plan changes and policy oriented issues which shifted focus towards specific capital projects and code changes. The first ten implementation items included the introduction of 5 new items in the City Capital Facilities Plan and 5 new policy items for insertion in the City's Comprehensive Plan.

Since this initial year new items from the plan have been implemented annually. The American Institute of Architects (AIA) report has become the Council endorsed vision for the City of Port Angeles. This vision complemented by the continued public input received at public meetings and engagement sessions over the last nine (9) years.

The vision focuses on improving: the gateways to our community, our downtown, our primary transportation corridors and sustaining and enhancing the quality of our local environment and economy. The visions approach is:

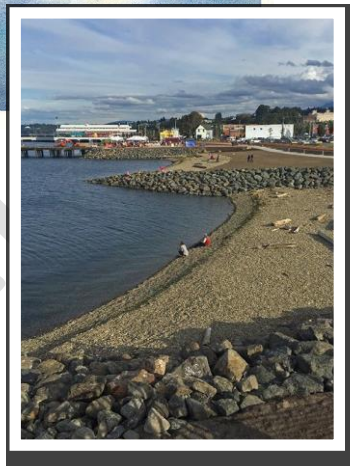
- integrative, holistic, and visual;
- central to achieving a sustainable relationship between humans, the natural environment, and the place;
- it gives three-dimensional form to a culture and a place; and
- it achieves balance between culture, environment, and economic systems.

Today the comprehensive plan acts as one of the primary implementing instruments of the AIA report.





Figure 1.03 – Phase II of efforts identified in the 2013 Waterfront & Transportation Improvement Plan (a subarea plan) designed, permitted and re-established a beach just west of Oak Street. The site had formerly been graded and utilized for mill operations. (Images: City of Port Angeles, Studio Cascade, Inc.)



City Actions Since the 2004 Update

Since the last major update of the Comprehensive Plan, several objectives have been accomplished. Those accomplishments include the replacement of both century-old trestle bridges spanning Valley Creek and Tumwater Creek on 8th Street. The bridge spanning Peabody Creek at Lauridsen Boulevard was replaced with a structure that will allow truck traffic to make the turn and follow Lauridsen as intended for a cross-town alternative to Highway 101.

The City's landfill has been closed and converted into a regional transfer station, and work to remove waste materials that remain in the marine bluff and stabilize the bluff to prevent further adverse impacts to the shoreline is now complete. A major project to resolve long-standing issues with combined sewer/stormwater systems overflowing into the Strait of Juan de Fuca has been completed and the second project phase is underway and nearing completion.

The City has followed through with the creation of new zone designations in anticipation of future annexations, especially the





Figure 1.04 – Phase I of efforts identified in the 2013 Waterfront & Transportation Improvement Plan designed and created a new esplanade along Railroad Avenue between Laurel and Oak streets. (Image: LMN Architects)

eastern UGA. The Commercial Regional zone was created to be applied to areas along Highway 101 where existing large commercial uses such as car dealerships and large-volume stores currently exist or where land is available for such uses. A major infrastructure goal was achieved with the extension of a sewer main line to the eastern UGA.

A second new zone was created for large suburban-scale residential lots. The Residential Single Family zone (RS-11), restricting residential lots to a minimum of 11,000 square feet or larger has been applied to areas within existing city limits.

An Industrial Marine (IM) zone was also created to be applied to shoreline areas focusing primarily on marine trades that may need the support of commercial uses to provide a framework for mixed uses in a campus-like environment.

In 2009 the City received a grant from the American Institute of Architects (AIA). The grant resulted community planning effort known as the Sustainable Design Assessment. The AIA Sustainable Design Assessment Team Report has been adopted and incorporated as an extension of the Comprehensive Plan. Implementation of the document can be found throughout the implementation chapter of this document as well as in the City's Strategic Plan.



Industrial zoning was modified to include the potential for work/live situations, where working artists requiring large work studios with industrial types of activities, are permitted to live at their studios by conditional use permit.

A major planning effort was completed in 2014. The Shoreline Master Program (SMP) was approved and accepted by the Department of Ecology, completing a five-year effort that included the writing of a new Harbor Resource Management Plan, Shoreline Inventory/Characterization/Analysis Document, a Cumulative Impacts Analysis and a Shoreline Restoration Plan. The shoreline planning effort took place concurrently with several restoration projects occurring on the south shoreline of Ediz Hook. The last phase of shoreline restoration was completed during the summer months of 2016, and will result in a continuous restored shoreline from Harbor View Park on the east to Sail and Paddle Park on the west.

A 358-acre area was annexed into the City in 2005. The area is located along the south side of Highway 101, west of the city limits at that time. The area primarily consists of the Eclipse Industrial Park, accommodating several large operations, and much of the area is zoned Industrial Heavy. Portions of the annexed area along Highway 101 also include commercial and residential uses.

Another major accomplishment is the construction of a Waterfront Promenade located between Oak Street and Laurel Street in the city's downtown. The promenade was the first phase of a multi-phase project planned for the downtown waterfront. The second phase, also completed, included creation of two small beach areas where hard-armored shoreline once existed west of Oak Street to the Valley Creek Estuary Park. Enhancements to the Waterfront Trail are also an integral portion of the project. Subsequent phases will improve the portion of Railroad Avenue east of Laurel Street to City Pier Park.

An associated downtown project that had been anticipated for several years was also completed. This "Gateway Project" resulted in a downtown transit center and covered pavilion area for public activities. The pavilion is now used regularly for the local Farmers Market, and as a venue for various festivals.



A portion of downtown's sidewalks and water lines were replaced beginning in 2006. As part of that project, the west side of Laurel Street between First and Front was developed to preserve the last remaining portion of the "Port Angeles Underground."

Regionally, a major effort involved the removal of the two dams placed on the Elwha River a century ago. This project included reconstruction of the City's water collection system and the intake for the industrial water supply. In addition, a new bridge was built spanning the river. The new bridge includes a suspended pedestrian/ bicycle segment of the Olympic Discovery Trail.

The Olympic Discovery Trail between the western city limits and 18th Street was improved as the trail right-of-way and was also used for a sewer line extension to the Lower Elwha Klallam Tribe's reservation lands. The sewer extension outside of the city was made necessary by the removal of the dams upstream from the reservation. The removal of the dams resulted in a higher ground water table, making on-site sewer drainfields unusable. The reservation is now served by City sewer facilities.

In 2007, the City added a Parks & Recreation Element to the Comprehensive Plan.

In 2009, the City implemented a Façade and Sign Improvement Grant program to help small businesses enhance the appearance of buildings in the city.

Another effort at citywide beautification was accomplished in 2014 with the passage of a Street Tree Ordinance. The passage of the ordinance resulted in the City being awarded the "Tree City USA" designation from the National Arbor Day Foundation.

All of the above-mentioned projects were included in the earlier version of the Comprehensive Plan as goals, policies, or objectives.



(This page is intentionally left blank)

DRAFT



Growth Management

2

This Comprehensive Plan has been developed in accordance with the requirements of the State Growth Management Act (GMA). The City met all of the Act's required deadlines for compliance and participated with Clallam County (The County), the City of Forks, the City of Sequim, area Tribes and other agencies in the development of a County-Wide Planning Policy.

Early in the planning process, the City agreed with the County to address only areas within the current City Limits in the Comprehensive Plan and to work with the County on a joint Comprehensive Plan for the Urban Growth Area (UGA). On April 13, 1993, the Board of Clallam County Commissioners adopted an Interim Port Angeles UGA. In 2005, the City and County entered into an interlocal agreement on a phased annexation plan for the Eastern UGA. A similar agreement was reached regarding the western UGA. At that time, the City established the intended zones that would be applied to areas annexed to the City from the Eastern UGA.

The following goals and policies are included to insure continued compliance with the GMA, and compatibility with the County's Comprehensive Plan outside of the Port Angeles UGA (PAUGA). Actions related to GMA goals and policies are included in Chapter 11, Implementation.

■ GMA Goals & Policies

Goal

- G-2A** To manage growth in a responsible manner that is beneficial to the community as a whole, is sensitive to the rights and needs of individuals, and is consistent with the State of Washington's Growth Management Act.

Policies

- P-2A.01** In all its actions and to the extent consistent with the provisions of this comprehensive plan, the City will strive to implement the following goals of the State Growth Management Act:
- a) *Urban growth. Encourage development in urban areas where adequate public facilities and services exist or can be provided in an efficient manner.*
 - b) *Reduce sprawl. Reduce the inappropriate conversion of undeveloped land into sprawling, low-density development.*
 - c) *Transportation. Encourage efficient multi-modal transportation systems that are based on regional priorities and coordinated with county and city comprehensive plans.*
 - d) *Housing. Encourage the availability of affordable housing to all economic segments of the population. Promote a variety of residential densities and housing types and sizes, and encourage preservation and expansion of existing housing stock.*
 - e) *Economic development. Encourage economic development throughout the region that is consistent with adopted comprehensive plans, promote economic opportunity, especially for unemployed and for disadvantaged persons, and encourage growth in areas experiencing insufficient economic growth, all within the capacities of the region's natural resources, public services and public facilities.*
 - f) *Property rights. Private property should not be taken for public use without just compensation having been made. The property rights of landowners should be protected from arbitrary and discriminatory actions.*



- g) *Permits. Applications for both state and local government permits should be processed in a timely and fair manner to ensure predictability.*
- h) *Natural resource industries. Maintain and enhance regional natural resource-based industries, including productive timber management, agricultural, and fisheries industries.*
- i) *Open space and recreation. Encourage the retention of open space and development of recreational opportunities, conserve fish and wildlife habitat areas. Increase access to natural resource lands and water, and develop parks.*
- j) *Environment. Protect the environment and enhance the state's high quality of life, including air and water quality, and the availability of water.*
- k) *Citizen participation and coordination. Encourage the involvement of citizens in the planning process and ensure coordination between communities and jurisdictions to reconcile conflicts.*
- l) *Public facilities and services. Ensure that those public facilities and services necessary to support development should be adequate to serve the development at the time the development is available for occupancy and use without decreasing current service levels below locally established minimum standards.*
- n) *Historic preservation. Identify and encourage the preservation of lands, sites and structures that have historical or archaeological significance.*

P-2A.02 The Port Angeles Urban Growth Area (PAUGA) should be established based at a minimum upon land use demand as determined by the Clallam County 20-year population forecast for Clallam County and specified sub-areas, so long as the county-wide forecast is not less than the most recent forecasts available from the State Office of Financial Management.

P-2A.03 Provide urban services/facilities consistent with the Capital Facilities Element.

P-2A.04 Work with the County and other service providers to determine the appropriate levels of service for such facilities and services and to ensure consistency between service provision within the City, the PAUGA, and the County.

P-2A.05 Include areas in the PAUGA that are characterized by urban growth adjacent to the existing City boundaries and take into account the area's physical features.

P-2A.06 Locate land designated for commercial or industrial uses that encourage adjacent urban development within the PAUGA.

P-2A.07 Base the amount of acreage designated for commercial, industrial, or other non-residential uses within the PAUGA upon the Land Use Element and Economic Development Element in the City's Comprehensive Plan.



- P-2A.08** Avoid and exclude critical areas and resource lands in the inclusion of the PAUGA unless addressed as part of the City's Comprehensive Plan.
- P-2A.09** Include, at a minimum, planning and the provision of sanitary sewer systems, solid waste collection/disposal systems, water systems, urban roads and pedestrian facilities, street cleaning services, transit systems, stormwater systems, police, fire and emergency services systems, electrical and communication systems, school and health care facilities, and neighborhood and/or community parks within the PAUGA.
- P-2A.10** Be the ultimate provider of urban services within the City limits and the PAUGA for those services the City provides except to the extent otherwise provided in a UGA Urban Services and Development Agreement that is reached pursuant to the County-Wide Planning Policy.
- P-2A.11** Provide constructed urban services/facilities for which the City is the ultimate provider to meet the design and construction standards of the City.
- P-2A.12** Demonstrate the financial capability for continued operation of a new facility prior to construction.
- P-2A.13** Ensure the protection of critical areas occurring within the PAUGA.
- P-2A.14** Promulgate all development regulations with due regard for private property rights in order to avoid regulatory takings or violation of due process and to protect property rights of landowners from arbitrary and discriminatory actions.
- P-2A.15** Work with the County to designate and set aside additional lands on the west side of the City for industrial and commercial purposes, both inside the City limits and in the UGA.
- P-2A.16** Establish performance measures to review progress toward accommodating growth and to ensure appropriate actions are taken to achieve the goals within the Comprehensive Plan.

Goal

- G-2B** To ensure the orderly transition of land within the PAUGA into the City of Port Angeles.

Policies

- P-2B.01** Annexation of land outside the established boundaries of the PAUGA shall not be allowed.
- P-2B.02** Annexation of land from within the established boundaries of the PAUGA shall be in accordance with the adopted annexation laws.
- P-2B.03** Annexation of land not adjacent to and/or contiguous with the established City Limits boundary-line, should not be allowed.



- P-2B.04** Appropriately classify and zone such land at the time of annexation based upon the City Comprehensive Land Use Map and the City Comprehensive Plan. The provisions, restrictions, and requirements of The Port Angeles Zoning Code shall apply to development of the annexed area.
- P-2B.05** Remain consistent with the orderly extension of urban services/facilities and be in accordance with the City's Comprehensive Plan and capital facility planning in the annexation and development of land.
- P-2B.06** Restrict annexation of developed land that cannot meet established concurrency requirements of the City within six years from the time of annexation.
- P-2B.07** Restrict annexation of land that results in decreased minimum standards for City streets, water service, sewer service, and/or electrical service provided to existing residents of the City.
- P-2B.08** Restrict annexation of land that results in decreased minimum standards for City solid waste collection, stormwater management programs, emergency services and/or telecommunication services provided to existing residents of the City.
- P-2B.09** Draw annexation boundaries to eliminate boundary, interjurisdictional, and service problems.
- P-2B.10** Obtain necessary rights-of-way and easements prior to or at the time of annexation.
- P-2B.11** Facilitate annexation in a manner that will minimize financial impact to all residents and businesses.
- P-2B.12** Annex urban growth areas (UGAs) in accordance with State statutes as facilities are extended into those areas and as new urban development takes place.



(This page is intentionally left blank)

DRAFT



Land Use 3

The Land Use Element establishes City policy regarding how land may be developed. This element and its Future Land Use Map (Figure 3.01) establishes the following six comprehensive plan land use categories:

- Low Density Residential
- Medium Density Residential
- High Density Residential
- Commercial
- Industrial
- Open Space.

These categories and their associated areas are configured in coordination with a wide range of planning considerations including population projections and a developable lands inventory, per GMA requirements. Details on these factors may be found in Appendices A and C.

Together, the goal and policy framework presented in this element provides direction in realizing Port Angeles' long-range vision regarding land use - including optimizing the city's relationship with its setting; supporting safe, attractive and character- rich neighborhoods; creating a more

dynamic, successful downtown; and supporting a wide range of recreational opportunities available to the entire community. Actions related to Land Use goals and policies are included in Chapter 11, Implementation.

Land Use Categories

These land use categories are described below and located on the Future Land Use Map.

Low Density Residential (Up to ~~6-25~~ units per acre)

The Land Use Map identifies three separate categories of residential land use. The first category is Low Density Residential, which allows an overall residential density to ~~6-25~~ units per acre. The high majority of residentially designated property in the City will be of this designation. It is intended ~~primarily~~ to accommodate single family homes, ~~duplexes, triplexes, quadplexes, townhouses, and cottage housing. It also allows for the development of accessory residential units and duplexes~~ in accordance with zoning regulations.

Medium Density Residential (~~Up to 14~~ Minimum 8 units per acre)

This category encourages property development involving multiple residential units including but not limited to ~~duplexes, triplexes, quadplexes, townhouses, cottage housing duplexes, townhouses,~~ condominiums, and apartments at a density no less than ~~4-8~~ units per acre ~~and up to 14 units per acre.~~

High Density Residential (~~Up to 40~~ Minimum 12 units per acre)

This category encourages development at a density no less than ~~10-12~~ units per acre ~~and up to 40 units per acre.~~ It is intended for areas where a higher concentration of residents is compatible with the surrounding area and uses. Condominiums and apartments, are the most common types of building designs appropriate for this category. ~~An exception is made for existing motel or hotel units converted to residential units at a density greater than 40 Units per acre).~~

Commercial

The Land Use Map contains one commercial category, thus providing maximum flexibility in the types of commercial uses allowed in permitted locations under the City's Zoning Ordinance.

Industrial

The Land Use Map also designates only one industrial category, thus again providing maximum in the types of industrial uses allowed in permitted locations under the City's Zoning Ordinance.

City of Port Angeles Comprehensive Plan



Open Space

The Open Space category specifies areas of the City with unique or significant physical open spaces, such as marine shorelines, bluffs, ravines, major streams, wetlands, critical wildlife habitat, and other natural areas deemed important to the community.

This category also includes developed parks and recreational spaces. The development of natural open space areas should minimize degradation the remaining natural open space. Goal G-3A

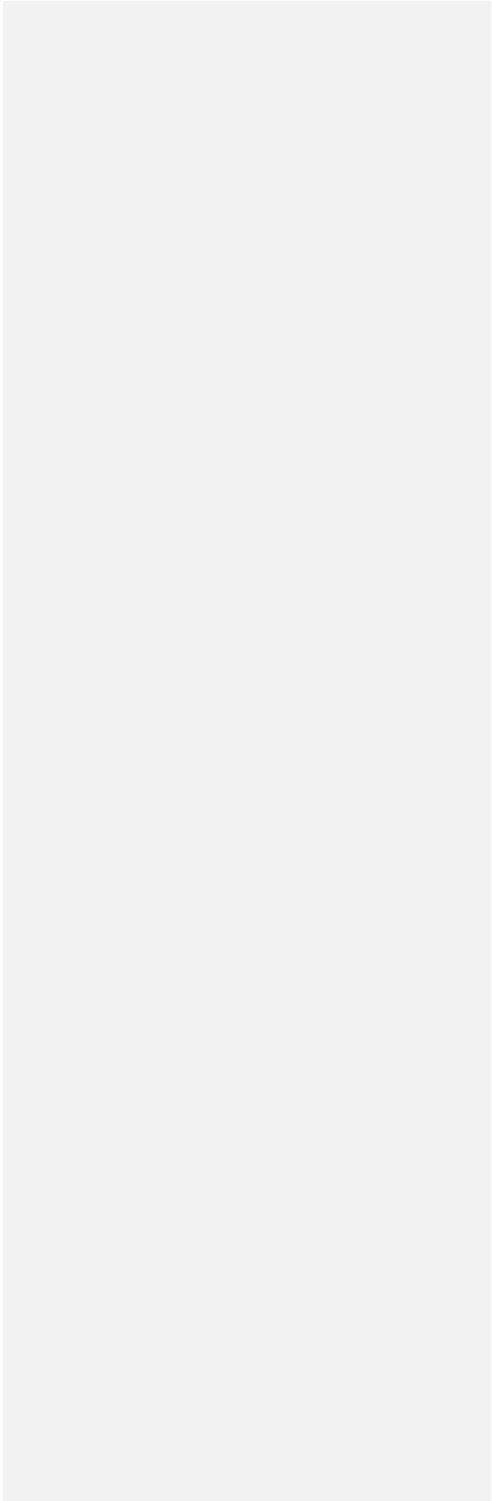
DRAFT

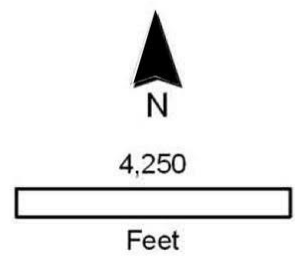
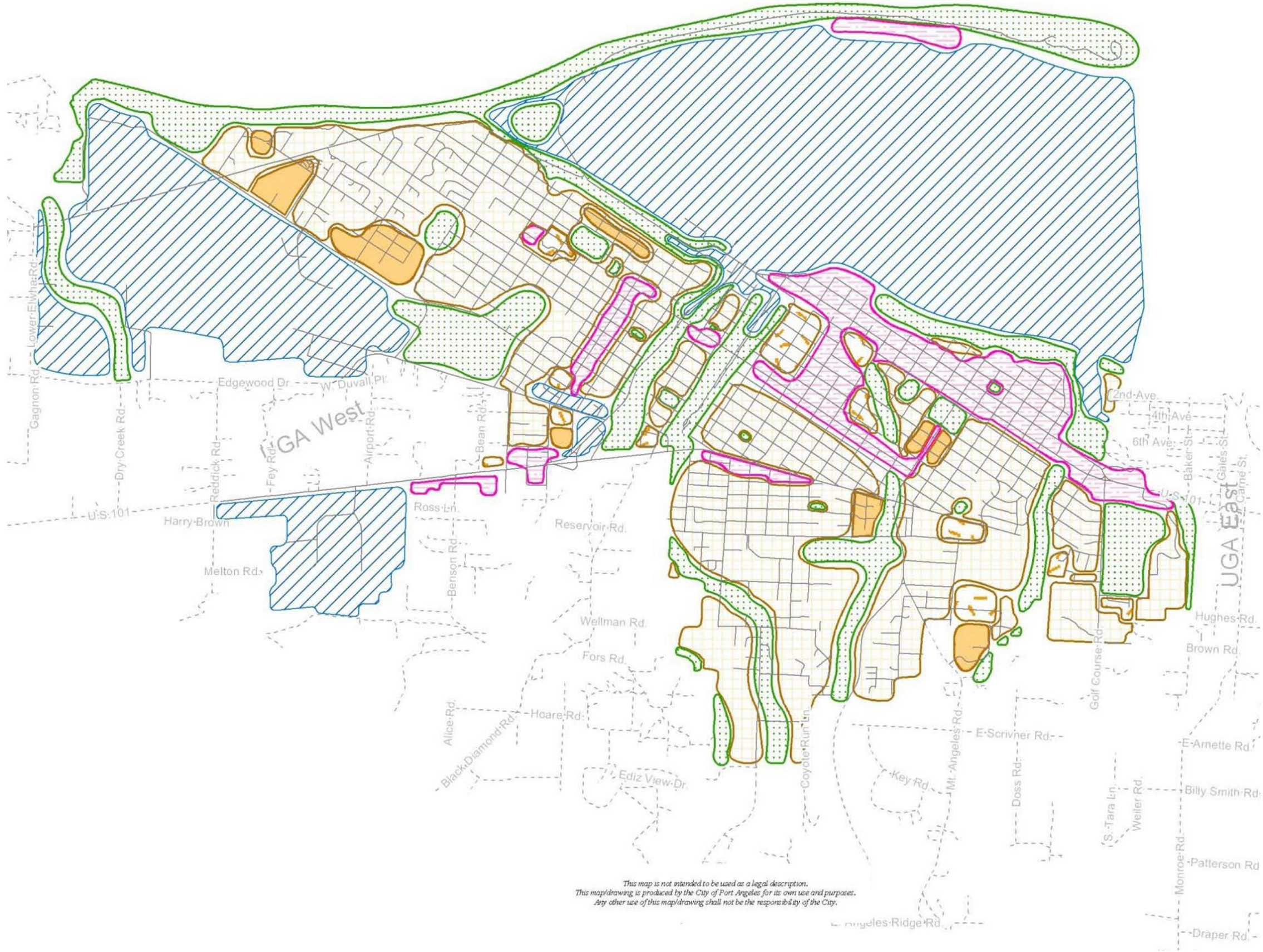


|

(This page intentionally left blank)

DRAFT





Legend

Land use

-  Commercial
-  Industrial
-  Low Density Residential
-  Medium Density Residential
-  High Density Residential
-  Open Space

Street centerline COPA



Street centerline Cnty



*This map is not intended to be used as a legal description.
This map/drawing is produced by the City of Port Angeles for its own use and purposes.
Any other use of this map/drawing shall not be the responsibility of the City.*

Figure 3.01 – Future Land Use Map

DRAFT

|
(This page intentionally left blank)

DRAFT

General Land Use Map Goals & Policies

Goals & Policies

Commented [ZT2]: Many goals relate to land use generally but do not pertain to just one land use category.

Goal

- G-3A** To guide land development in a manner that balances providing certainty about future land use and allowing flexibility necessary to adapt to future challenges and opportunities.

Policies

- P-3A.01** Use the Comprehensive Plan Land Use Map as a conceptual guide when making all zoning and other land use decisions, including all land use decisions and approvals made by City Council and/or any of its appointed Commissions, Boards, or Committees.
- P-3A.02** Use low impact development techniques, where feasible in new land development.

Goal

- G-3B** To protect and enhance the area's unique physical features, its natural, historical, archaeological, and cultural amenities, and the overall environment.

Policy

- P-3B.01** Encourage identification, preservation, and restoration of sites and structures that have historical or cultural significance.

Commented [ZT3]: Type 1, 2, 3, 5

Goal

- G-3C** To guide land development in a manner that balances providing certainty about future land use and allowing flexibility necessary to adapt to future challenges and opportunities.

Policies

- P-3C.01** Protect infrastructure along waterfronts, including roads, pedestrian and bikeways, and structures.
- P-3C.02** Evaluate risks of future building on coastal bluffs for sea level rise impacts.
- P-3C.03** Review all new development for impacts on climate change and adaptation to sea level rise through SEPA.

Commented [ZT4]: Type 1, 2, 4, 5

Commented [ZT5]: Type 2, 6

Goal

- G-3D** To enhance energy and resource efficiency and diversify the grid

to build resilience and capacity to prepare for increased energy demand.

Policies

P-3D.01 Encourage the use of Green Building techniques for new developments and support Green Built certification for new developments.

Commented [ZT6]: Type 1, 2, 5

P-3D.02 Allow the conditional siting of clean-energy facilities (e.g., solar, wind, geothermal, wave, tidal) outside of industrial areas to increase the supply of renewable energy to the grid.

Commented [ZT7]: Type 5

P-3D.03 Provide incentives and education for low-income residents to participate in renewable energy access and energy efficient retrofits.

Commented [ZT8]: Type 4

Residential Goals & Policies

Goal

G-3B-3E To ensure residential land use and development is compatible with the environment with existing uses and residents, and with desired urban design in a way that increases resilience against climate impacts such as drought and extreme heat.

Commented [ZT9]: Type 1, 2, 3

Policies

P-3B3E.01 Provide urban services to all residential areas as required by the Capital Facilities Element concurrency policy.

P-3B3E.02 Ensure that single family lots are of reasonable shape and have access provided by a collector arterial, local access street or alley.

P-3B3E.03 Require the subdivision of large lots which leaves remaining lots larger than the minimum density for the zone to allow future subdivisions at the densities permitted for the zone in which they are located.

P-3B3E.04 Design streets and circulation patterns in all new residential developments to enable fire protection and service vehicle access as key factors in street design and circulation pattern.

P-3B3E.05 Encourage street improvements and acquisition of rights-of-way to further the grid street pattern in the central "townsite" area of the City. Permit cul-de-sacs and curvilinear streets in outlying areas subject to low impact development standards when designed in conjunction with the main street grid.



P-3B3E.06 Encourage residential development to preserve and capitalize on existing unique natural, historic, archaeological, and/or cultural features including promotion of native and drought tolerant vegetation and scenic views.

P-3E.07 Encourage new residential development to include underground utilities to promote resilience.

P-3E.08 Encourage design of new residential development that maximizes southern exposures and solar efficiency, protects from prevailing winds, and is designed to minimize energy use.

P-3B3E.0709 Emphasize the overall density of the development rather than minimum lot sizes when planning new residential development.

Commented [ZT10]: Type 1, 2, 5

Goal

G-3C3F To create and maintain a fulfilling and enjoyable community of viable districts and neighborhoods with a variety of residential types attractive to people of all ages, characteristics and interests.

Policies

P-3C3F.01 Employ the district and neighborhood concept when developing residential land. Although such districts may be composed primarily of residential uses of a uniform density, the most healthy, viable districts are composed of residential uses of varying densities, and may be augmented, by other compatible uses. Single family and multi-family homes, parks and open-spaces, schools, churches, day care and residential services, home occupations, and district shopping areas are all legitimate components of residential districts

P-3C3F.02 Ensure medium and high density housing is served by arterial streets of sufficient size in order to satisfy traffic demand and to lessen neighborhood traffic congestion.

P-3C3F.03 Apply medium and high density housing policies to mobile home parks.

P-3C3F.04 Treat manufactured homes that meet current state regulations as site constructed housing for zoning purposes.

P-3FC.05 Expand housing opportunities in the Central Business District for all income levels, with an emphasis moderately priced owner-occupied units.

Goal

G-3G Increase the housing stock to create more housing capacity, attainability, and an appropriate vacancy rate.

Policies

P-3G.01 Encourage high-density infill, affordable housing, and mixed-use development to increase the housing stock and increase walkability.

P-3G.01 Decrease or remove parking minimums to allow higher occupancy land

use.

Commented [ZT11]: Type 4, 6

■ Commercial Goals & Policies

Goal

G-3D3H To create and maintain a healthy and diverse commercial sector for a balanced and stable local economy.

Policies

P-3D3H.01 Encourage the recruitment of new and the retention of existing commercial developments and businesses

3•8

City of Port Angeles Comprehensive Plan



DRAFT

- P-3D3H.02** Allow public uses such as government offices, public service buildings, and other public and quasi-public facilities and services in commercially designated areas.

Goal

- G-3E-3I** To provide shopping areas meeting the needs of all City residents and visitors that are safe, compatible with surrounding land uses, and congruent with environmental goals.

Policies

- P-3E3I.01** Mitigate the impacts of commercial development on adjacent residential properties, including the use of site design elements that soften the impacts.
- P-3E3I.02** Separate vehicles and bicycles from pedestrian areas whenever possible to accommodate vehicular traffic and pedestrian safety.
- P-3E3I.03** Locate shopping areas at the intersections of arterial streets of sufficient size to satisfy traffic demand and at the boundaries of neighborhoods so that more than one neighborhood may be served.

Goal

- G-3F3J** To provide a pleasant, safe, and attractive shopping environment in the traditional downtown waterfront area including a wide variety of shopping, dining, entertainment, arts, culture, and housing opportunities for visitors and residents alike.

Policies

- P-3F3J.01** Guide commercial development in the traditional downtown to emphasize its waterfront location and historic heritage
- P-3F3J.02** Orient the design of commercial development in downtown around pedestrian travel, tourist enjoyment, and protection from adverse weather conditions.
- P-3F3J.03** Actively promote improvements to the traditional downtown area through beautification projects and in cooperation with downtown business merchants.
- P-3F3J.04** Encourage residential units in the downtown area as part of a mixed-use development concept, including live/work spaces. Ensure that the downtown physical environment is amenable to residential development by minimizing traffic impacts, maintaining security, and providing and maintaining amenities.



■ Industrial Goals & Policies

Goal

G-3G3K To create and maintain a healthy and diverse industrial sector for a balanced and stable local economy.

Policies

- P-3G3K.01** Develop and promote a cooperative intergovernmental plan for comprehensive development of industrial infrastructure and amenities to attract and support light and heavy industry.
- P-3G3K.02** Allow office, commercial, and limited live/work uses in specifically designated industrial areas. Encourage live/work environments for art or media based cultural activities that are consistent with and avoid impact on neighboring industrial uses.
- P-3G3K.03** Consider the William R. Fairchild International Airport an essential public facility, as referenced in Appendix B (Clallam County-Wide Planning Process).

Goal

G-3H3L To provide **and incentivize** opportunities for industrial development in a manner, which efficiently uses the community's natural resources and physical environment, has minimal impact on the natural environment, contributes to quality of life, and is compatible with the desired development patterns

Commented [ZT12]: Type 3, 6

Policies

- P-3H3L.01** Ensure provision of urban services to all industrial areas, as required by the Capital Facilities Element concurrency policy.
- P-3H3L.02** Develop infrastructure, which makes sites attractive and ready to develop, including transportation facilities and utilities at industrial parks. Industrial development should be encouraged to follow industrial park design concepts.
- P-3H3L.03** Ensure that industrial areas mitigate nuisances and hazardous characteristics such as noise, air, water, odor, pollution, or objectionable visual material.
- P-3H3L.04** Do not permit petroleum refineries, liquefied natural gas and liquefied petroleum gas facilities, non-clean energy facilities, energy plants and their associated facilities and associated transmission facilities (as defined in Chapter 80.50 RCW) outside the heavy industrial use area and without conditional use review. These facilities are hazardous to the community and detrimental to the general environment of the area.



P-3H3L.05 Discourage the siting of land uses incompatible with airport related uses and other neighboring land uses adjacent to the William R. Fairchild International Airport

P-3H3L.06 Allow the conditional siting of clean-energy facilities (e.g., solar, wind, geothermal, wave, tidal) outside of industrial areas.

P-3H3L.07 Through the SEPA process, consider the climate change impacts of any proposed new industrial activity or expansion before approval.

Commented [ZT13]: Type 3, 6

Goal

G-3M To facilitate reuse of large vacant or isolated industrial areas no longer in operation to improve the local economy and employment stability.

Policies

P-3M.01 Allow a wide range of land uses in the redevelopment of large vacant or isolated industrial areas no longer in operation, including mixed-use development, commercial development, or residential development as well as industrial uses, provided that these uses will not encourage the conversion of other industrial areas to non-industrial use.

Goal

G-3N Make Port Angeles food secure by promoting regional sustainable agriculture, utilizing multiple sources for food procurement, and increasing food production within the City.

Policies

P-3N.01 Partner with North Olympic Development Council to designate funding to promote and establish urban sustainable agriculture/food forests.

P-3N.02 Encourage partnerships between local farms/farmers and residents to establish local food production projects.

P-3N.03 Work with the Department of Community and Economic Development and the Department of Public Works & Utilities to develop policies that foster agreement and resource availability systems for allowing gardening for food, habitat, or both in the right-of-way (e.g., planting strips) and explore irrigation incentives.

P-3N.04 Leverage existing zoning regulations that encourage land use overlays for food production. Work with stakeholders and developers to promote land uses that facilitate local food security.

P-3N.05 Implement zoning updates that simplify urban gardening like water conservation techniques, allowing fencing, and allowing personal and community gardens

Commented [ZT14]: Type 2, 3, 4, 5, 6

■ Open Space Goals & Policies

Goal

G-330 To create open space within the urban landscape, retain natural landscapes, preserve fish and wildlife habitat, and to provide natural corridors connecting wildlife habitats.

Policies

- P-330.01** Preserve unique or major physical features such as marine shorelines, bluffs, ravines, streams, wetlands, wildlife habitat and other environmentally sensitive areas deemed of significant importance to the community as designated open space.
- P-330.02** Promote the preservation of wildlife habitat and open space corridors between the waterfront and Olympic National Park.
- P-330.03** Regulate access to natural areas open spaces so as to avoid degrading areas and to protect the rights of property owners. Discourage intensive recreational uses and construction of impervious surfaces in sensitive open spaces.
- P-330.04** Preserve wooded areas, vegetation, and individual trees in the urban landscape, as they serve a functional purpose in climate, noise, light, habitat, and pollution control.



Goal

G-3K3P To encourage the development of parks and recreational opportunities for all residents of the City and to increase access to natural areas in a manner that minimizes adverse impacts, and achieves the desired urban design of the City.

Policies

- P-3K3P.01** Ensure that development and planning of parks and recreational facilities is consistent with the Capital Facilities Element.
- P-3K3P.02** Distribute public parks and recreational facilities equitably throughout the City to afford access to all residents.
- P-3K3P.03** Utilize land donated for public use to provide common open space, public buildings, parks, and recreational opportunities, while incorporating LID techniques and BMPs in all projects where feasible.
- P-3K3P.04** Preserve and maintain unique or major physical features contained within the boundaries of City parks and recreational areas for access and enjoyment by residents of the community.
- P-3P.05** Adapt parks and recreation facilities to reflect the risks of climate change including sea level rise, extreme heat, extreme precipitation, and drought. Prioritize actions based on the critical nature of the facility.
- P-3P.06** Consider the relationship of parks and recreation facilities to emergency management and human health such as facilities used as community hubs. Consider business continuity and economic development, such as the wharf, beaches, and trails.
- P-3K3P.0507** Cooperate with the County and other jurisdictions in planning, funding, constructing, and managing multi-purpose recreation and transportation trails which link together various areas of the City, the Port Angeles Urban Growth Area (PAUGA), and other areas of the County and region.

Commented [ZT15]: Type 2, 3, 6

Goal

G-3Q To create open space within the urban landscape, retain natural landscapes, preserve fish and wildlife habitat, and to provide natural corridors connecting wildlife habitats.

Policy

P-3Q.01 Preserve unique or major physical features such as marine shorelines, bluffs, ravines, streams, wetlands, wildlife habitat and other environmentally sensitive areas deemed of significant importance to the community as designated open space and those vulnerable to climate change impacts.

Commented [ZT16]: Type 1, 2, 5

Goal

G-3R To encourage the development of parks and recreational

opportunities for all residents of the City and to increase access to natural areas in a manner that minimizes adverse impacts and achieves the desired urban design of the City.

Policy

P-3R.01 Cooperate with the County and other jurisdictions in planning, funding, constructing, and managing multi-purpose recreation and transportation trails which link together various areas of the City, the Port Angeles Urban Growth Area (PAUGA), and other areas of the County and region. Adapt trail designs, materials, and locations to reflect the risks of sea level rise.

Commented [ZT17]: Type 1, 2, 5

Goal

G-3S Protect and preserve ecosystems by increasing resilience to climate hazards such as heat, flooding, drought, sea level rise, and reduced snowpack that pose a risk to forest productivity, pest outbreaks, fish and wildlife habitats, and water quality.

Policies

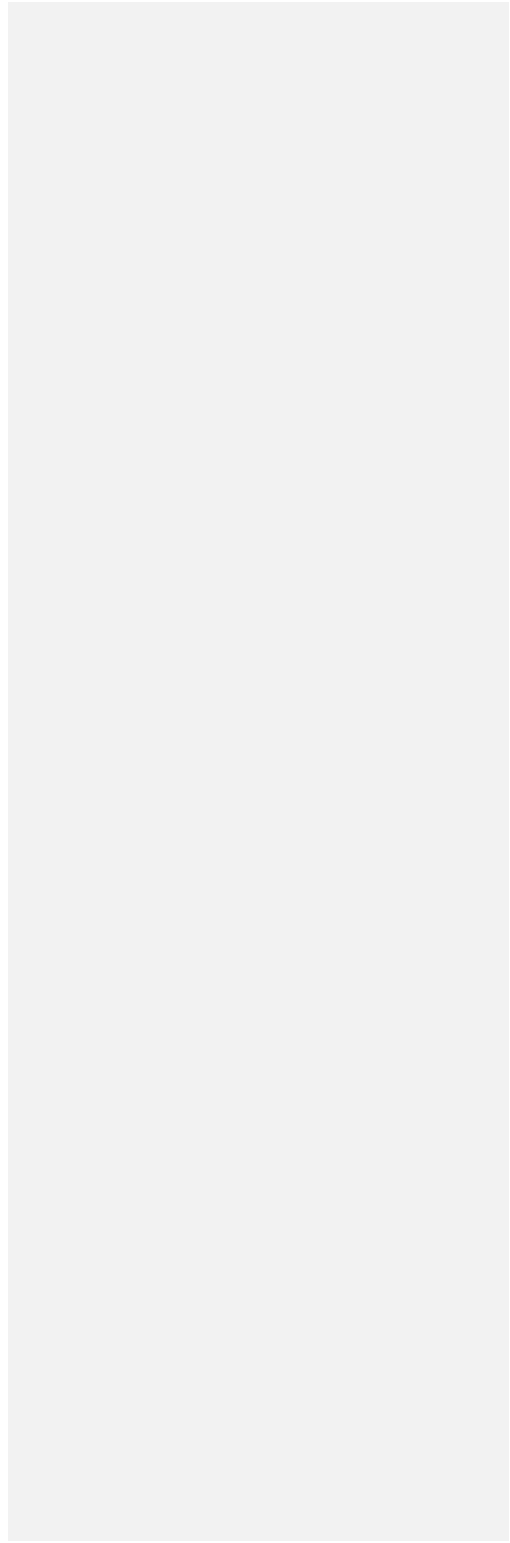
P-3S.01 Establish and implement an urban tree management program intended to retain and/or restore the overall tree canopy in the city by using plant materials as a unifying element and tool to protect the health, safety and welfare of the public

P-3S.02 Utilize the environmental services provided by trees to mitigate the negative effects of impervious surfaces and vehicular traffic such as increased temperatures, airborne particulates, carbon dioxide, noise, and stormwater runoff.

Commented [ZT18]: Type 1, 2, 5



DRAFT



4

Transportation

The intent of the Transportation Element is to define in a comprehensive manner how vehicular traffic and non-motorized modes of travel are to be routed from one portion of the community to another in the most efficient, economical, and compatible manner. The City's Circulation Plan in accordance with the Statewide National Functional Classification System identifies the City's principal arterial streets, minor arterial streets, and collectors with the remaining streets classified as local streets (See Figure A•14). The City's Circulation Plan acknowledges that such a regional system serves many functions. It is a means of intercity commuting, a way to promote economic development, a means to promote a healthy lifestyle, and a way to provide future utility right-of-way.

Together, the goal and policy framework presented in this element (and the analysis in Appendix D) provides direction in realizing the City's long-range vision regarding transportation - including support for a strong economy; creating walkable, people-friendly environments; and improving the health and quality of life for all residents of Port Angeles. Actions related to Transportation are included in Chapter 11, Implementation.

■ Transportation Goals & Policies

Goal

- G-4A** To develop a coordinated, multimodal transportation system, which serves all areas of the city and all types of users in a safe, [accessible](#), economical, and efficient manner.

Policies

- P-4A.01** The safety of non-motorized modes of transportation shall be a primary consideration in the circulation system.
- P-4A.02** Planning for transportation services and facilities (including public streets, bikeways, pedestrian walkways, public and private air, marine and land transit services and facilities) shall be performed consistent with the goals and policies of the Capital Facilities Element.
- P-4A.03** Road improvements should provide for alternate modes of transportation, and new roads should be evaluated for the ability to accommodate alternate modes of transportation.
- P-4A.04** Encourage development of low-carbon-impact transportation infrastructure.
- P-4A.05** Consider converting alleyways into attractive pedestrian zones for access to local businesses. Encourage alleyways for use as pedestrian zones.
- P-4A.06** Improve trails, sidewalks, streets, and public facilities to encourage walkability and non-motorized transportation.
- P-4A.07** [Support Clallam Transit in expanding public transit infrastructure and services to ensure access to buses is available at all times and decrease the need for travel in single-occupancy vehicles. This includes:](#)
- [Develop strategies that promote transit equity and community safety by considering the most vulnerable, then design and implement transit to support pedestrians, bicycles, mass transit, and individual cars, in that order.](#)
 - [Increase use of the park and ride system.](#)
 - [Implement fare-free transit within Port Angeles city limits.](#)
 - [Explore the feasibility of adding a high-speed electric or hybrid passenger ferry to Seattle.](#)
 - [Reference Clallam Transit's Comprehensive Operational Analysis for implementation](#)

Goal

- G-4B** To improve circulation patterns across and within the community, and to achieve the desired urban design of the City.

Commented [ZT19]: Type 2, 3, 4, 5, 6

Policies

- P-4B.01** Consider traffic flow modifications such as signalization, signing, parking restrictions, channelization, and one-way couplets before physical alterations are made to existing streets.
- P-4B.02** Divert cross-town truck traffic around the downtown area.
- P-4B.03** Facilitate the planning processes necessary for the development of an alternate local cross-town route with improvements that provide full access at US 101 and SR 117 (the Tumwater Truck Route).
- P-4B.04** Strengthen the city's development regulations as necessary to preserve the right-of-way within an identified US 101 corridor
- P-4B.05** Advocate a second crossing over White's Creek.



DRAFT

- P-4B.06** Design and construct new arterial streets, local access streets, and alleys to conform to the most current editions of the Statewide National Functional Classification System for Federal Aid Systems, WSDOT, and Transportation Improvement Board minimum design standards and standards as adopted by the City. Permeable pavement is preferred for local access streets and alleys where feasible.
- P-4B.07** Publicly dedicate street rights-of-way associated with the subdivision processing advance of the time of individual lot development in accordance with the Comprehensive Plan's Circulation Plan Map.
- P-4B.08** Locate principal, minor, and collector arterial streets on the edge of district boundaries wherever possible.
- P-4B.09** Ensure off-street parking should be sufficient and accessible within business and residential areas so the traffic flow of the street is not impaired.
- P-4B.10** Police and fire protection should be a key factor in residential subdivision street designs and circulation patterns.
- P-4B.11** Coordinate the development of the City's comprehensive service and facilities plan for streets, bikeways, pedestrian walkways, and the overall transportation system and regional transportation plans.
- P-4B.12** Work with other jurisdictions to identify and protect a right-of-way for a second developed right of way
- P-4B.13** Work with public and private transportation providers to provide greater access and opportunities to residents, including Sunday and holiday service.
- P-4B.14** Consider potential environmental consequences, such as greenhouse-gas emissions and carbon footprints, when encouraging new commercial developments and businesses.

Goal

G-4C To provide a system of walking trails and bicycle paths to complement and coordinate with the existing street system and provide recreational opportunities and physical activity while reducing the dependence on traditional automobile transportation.

Policy

P-4C.01 Maximize bicycle and pedestrian infrastructure and other active-transportation systems and improve sidewalk connectivity.

Commented [ZT20]: Type 1, 2, 4, 5

Goal

G-4D To increase the resilience of transportation structures to floods, extreme precipitation events, sea level rise, and reduced snowpack.

Policy

P-4D.01 Protect and adapt critical facilities and their operations to reflect risks of sea level rise such as at the Black Ball Ferry Terminal and other essential

public facilities.

Commented [ZT21]: Type 2, 5, 6

Goal

G-4E To increase the resilience of transportation structures to floods, extreme precipitation events, sea level rise, and reduced snowpack.

Policy

P-4E.01 Coordinate with regional partners to assess roads for flooding and landslide hazards in conjunction with WSDOT.

Commented [ZT22]: Type 2, 3, 4

Goal

G-4F Increase the access to EV charging infrastructure to support the transition to EV.

Policy

P-4F.01 Promote and incentivize EV infrastructure in the private and public sectors.

Commented [ZT23]: Type 2, 3, 4, 6

Goal

G-4G Enhance emergency services to address response to extreme heat, drought, flooding, sea level rise, and wildfire.

Policy

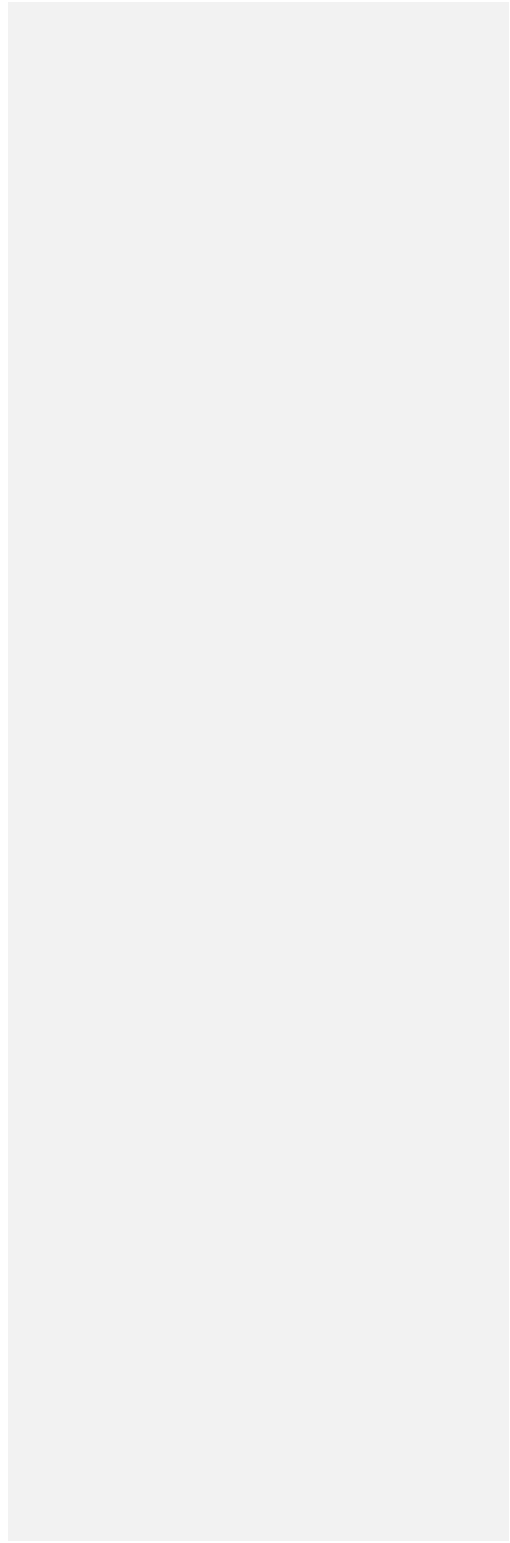
P-4G.01 Improve current emergency evacuation routes.

P-4G.02 Site new emergency evacuation routes to increase route redundancy in case the current emergency evacuation route is affected by the emergency.

Commented [ZT24]: Type 2, 4, 5



DRAFT



|

(This page intentionally left blank)

DRAFT

Utilities & Public Services

5

The Utilities and Public Services Element identifies and addresses the various services that make a community a safe and desirable place to live. It also establishes policies that define which services are the responsibility of the City to provide and which should be provided by the community as a whole.

Taken together, the policy framework presented in this element will help Port Angeles realize many of its long-range goals - including sustaining the natural environment; supporting economic growth and opportunity; and helping keep services efficient and cost-effective. Actions related to Utilities and Public Services are included in Chapter 11, Implementation.

■ Utilities Goals & Policies

Goal

- G-5A** To provide or allow the opportunity for services and facilities which enhance the quality of life for Port Angeles citizens of all ages, characteristics, needs, and interests and to achieve the desired urban design of the City.

Policies

- P-5A.01** Include provisions in public facilities for citizens with disabilities and construct them according to accepted standards.
- P-5A.02** Locate social services providing home care in residential neighborhoods in a manner that maintains the character of the immediate neighborhood.
- P-5A.03** Comprehensive service and facility plans should be consistent with the City's Comprehensive Plan and should be implemented through applicable land use approvals and construction permits.
- P-5A.04** Encourage age-appropriate services for all-age groups.
- P-5A.05** Incorporate tribal issues and interests into city projects.

Goal

- G-5B** To support services and facilities through different levels of participation in cooperation with other public or private agencies.

Policies

- P-5B.01** The City should be the "primary responsible agency" and should take the lead in cooperation with other governmental entities to provide:
- *Utility and emergency services (water, sewer, electrical, stormwater, police, fire and emergency medical response services)*
 - *Transportation infrastructure, including trails and sidewalks and*
 - *Parks and recreation*
- P-5B.02** The City should participate as a "financial partner" to support essential programs and services including:
- *Youth recreation programs and facilities*
 - *Library facilities*
 - *Senior programs*
 - *Low and moderate income housing programs*
 - *Facilities for senior programs*
 - *Utility assistance for low income households, and*



- *Social and public health services.*

P-5B.03 As a "supporter," the City should promote and cooperate in providing programs and services including:

- *Library programs such as information and assistance*
- *Affordable housing information and referral*
- *Economic and business development services*
- *Tourism information and services*
- *Schools and community learning*
- *Fine arts*
- *Community recreation*
- *Public and private youth, family and senior services*
- *Telecommunications and*
- *Crime prevention programs*
- *Health Care programs.*

P-5B.04 Develop and use public facilities cooperatively, in the promotion of social and community services.

Goal

G-5C To provide safe, clean, usable, and attractive public facilities which enhance the cultural, educational, economic, recreational, and environmental attributes of the City.

Policies

P-5C.01 Support industrial diversification by the development of urban services.

P-5C.02 Major parks and large open spaces should provide for a variety of outdoor activities and be located to take advantage of natural processes (such as wetlands and tidal actions) and unusual landscape features (such as cliffs and bluffs), and to integrate stormwater facilities into the natural landscape where feasible (such as LID techniques and BMPs and stormwater treatment wetlands).

P-5C.03 Provide a variety of settings and activities suitable to people of all ages, characteristics, and interests.

P-5C.04 Encourage more active involvement and communication between education (professional and student), business, community, art and cultural communities to help integrate key people into the startup community.

P-5C.05 Work in partnership with the community as stewards of the area’s unique environment and quality of life.



Goal

G-5D To provide utility services in an efficient and cost-effective manner.

Policies

- P-5D.01** Design urban services for the maximum planned density and/or land use intensity of a given area as designated on the Comprehensive Plan Land Use Map.
- P-5D.02** Provide urban services only in areas that are logical extensions of areas, which are currently served by such services or needed to implement a specific goal or policy of the Comprehensive Plan.
- P-5D.03** Promote and encourage energy conservation, renewable energy, distributed energy generation, improved distribution efficiencies, and recycling efforts throughout the community.
- P-5D.04** Promote the joint use of transportation rights-of-way and utility corridors for all forms of transportation, including non-motorized.
- P-5D.05** Promote coordination, consistency, and concurrency at all stages of utility development in the Port Angeles Urban Growth Area.
- P-5D.06** Planning for utility services should be consistent with the goals and policies of the Capital Facilities Element.
- P-5D.07** Serve new development with sanitary sewers.
- P-5D.08** Consider the policies adopted in the Water Resources Inventory Area 18 Watershed Management Plan, including the provision of water supply to the urban areas in and between the Elwha River and Morse Creek drainage basins.
- P-5D.09** Provide infrastructure to all industrial lands to encourage development.
- P-5D.10** Encourage the use of renewable energy in both the private and public sectors, providing all reasonable support and advocacy at the State level for regulations and incentives that encourage such installations.

Goal

G-5E Enhance energy and resource efficiency and diversify the grid to build resilience and capacity to prepare for increased energy demand.

Policies

- P-5E.01** Provide incentives and education for low-income residents to participate in renewable energy access and energy efficient retrofits.
- P-5E.02** Incentivize active and passive solar building design and leverage existing Bonneville Power Administration programs (e.g., energy efficiency incentives) and state and federal funding sources and policy.

Commented [ZT25]: Type 2, 4, 5, 6

Goal

G-5F Enhance emergency services to address response to extreme heat, drought, flooding, sea level rise, and wildfire.

Policies

P-5F.01 Identify safe evacuation routes for earthquakes, tsunamis, high-risk debris flow, and landslide areas.

P-5F.02 Improve knowledge of earthquake, tsunami, and landslide hazard areas and understanding of vulnerability and risk to life and property in hazard-prone areas.

P-5F.03 Evaluate current earthquake, tsunami, and landslide warning systems to ensure effectiveness and efficiency and increase coordination between local jurisdictions.

P-5F.04 Strengthen response to earthquakes, tsunamis, and landslides by incident management teams to increase resilience.

P-5F.05 Create Community Wildfire Preparedness Plan.

P-5F.06 Provide education and outreach to residents to ensure their personal preparedness in the event of a wildfire.

P-5F.07 Enhance Emergency Services to increase efficiency of wildfire response and recovery activities.

P-5F.08 Complete a new wildfire assessment that Wildland Urban Interface areas.

P-5F.09 Development and dissemination of maps relating to the fire hazard to help educate and assist builders and homeowners in being engaged in wildfire mitigation activities, and to help guide emergency services during response.

P-5F.10 Improve brush clean-up operations to decrease wildfire fuel.

P-5F.11 Improve current emergency evacuation routes. Site new emergency evacuation routes to increase route redundancy in case the current emergency evacuation route is affected by the emergency.

Commented [ZT26]: Type 2, 4, 5, 6

Commented [ZT27]: Type 4, 5

Goal

G-5G Prepare conservation strategies and protect water quality to increase resilience to drought, sea level rise, and reduced snowpack.

Policies

P-5G.01 Water supply monitoring & enhancement to increase resilience during drought periods.

P-5G.02 Reduce water consumption through education and incentive programs. For example:

- Create a smart grid water use system and share data with consumers to increase conservation.
- Promote and incentivize smart irrigation technologies for golf courses and parks.
- Update water rates to discourage watering lawns.

Commented [ZT28]: Type 2, 5

- Provide incentives for efficient food cultivation.

Commented [ZT29]: Type 2, 3, 5

P-5G.03 Maintain and enhance the quality of water resources through the regulation of clearing, grading, dumping, discharging, and draining and the provision of flood and erosion control measures and regulations to protect wetlands and other environmentally sensitive areas. Use adaptive management practices and best available climate science and projections to inform these efforts.

Commented [ZT30]: Type 1, 2, 3, 5



DRAFT



6

Housing

The City recognizes the extreme importance of available clean, safe, and affordable housing in the community.

The results of the 2006 study and public input provided during the 2016 update process, and 2019 Housing Action Plan influenced the development of the following goals, policies and objectives, which strive to achieve Port Angeles' long-range vision for housing. Beyond improving the quality, affordability, attainability, and availability of housing for residents, this element is seen to support community objectives related to economic development, downtown growth, neighborhood character, and service-efficient, more cost-effective development patterns. The Actions related to Housing are included in Chapter 11, Implementation.

■ Housing Goals & Policies

Goal

- G-6A** To improve the variety, quality, availability, and attainability of housing opportunities in the City of Port Angeles.

Policies

- P-6A.01** Expand the residential land use options in the Zoning Code by classifying residential zones by allowed density rather than by housing types.
- P-6A.02** Allow residential uses in all non-industrial zones. In situations where a limited work/live environment is found to be compatible with an underlying industrial zoning, limited work/live environments may be deemed suitable when the living space is subordinate in nature to the industrial use component and the integrity and intent of the industrial zone is maintained.
- P-6A.03** Encourage the retention and development of safe and attractive mobile home parks.
- P-6A.04** Plan for sufficient urban services to support future housing in a variety of allowable densities.
- P-6A.05** Allow accessory residential units in single family residential zones.
- P-6A.06** Promote acceptance of low and moderate income housing.
- P-6A.07** Consider the effect of impact fees on the affordability of housing prior to establishing such impact fees.
- P-6A.08** In accordance with RCW 59.18.440 and .450, require State and Federal publicly assisted housing under current contracts who demolish, substantially rehabilitate, change the use of residential property, or remove use restrictions developments to provide relocation assistance to those tenants displaced as provided for in sections 49 and 50 of the Growth Management Act.
- P-6A.09** Work with the County to increase densities in some areas of the sparsely developed southwestern UGA along Lauridsen Boulevard from low density to medium density, consistent with the recently developed airport safety zones and FAA use recommendations.
- P-6A.10** Investigate the appropriate siting of additional land to be designated medium density and high density.
- P-6A.11** Provide an appropriate balance between attainable market-rate housing and affordable housing and ensure that affordable housing is provided in a way that contributes to the physical appearance and economic and social health of the neighborhoods and the City.
- P-6A.12** Encourage the use of Green Building techniques for new developments and support Green Built certification for new developments.



Commented [ZT31]: Type 2, 4

- P-6A.13** Encourage the use of Low Impact Development stormwater management techniques (such as vegetated roofs, permeable pavement, [rainwater harvesting](#), and bio-retention) for all new developments.
- P-6A.14** Allow for mixed-use opportunities in neighborhoods, including commercial development and mix of housing densities.
- P-6A.15** Identify opportunities for housing revitalization in targeted areas including the downtown core.
- P-6A.16** Promote and increase the number of downtown residential living units.
- P-6A.17** Develop strategies to combat homelessness and housing insecurity amongst residents.
- P-6A.18** Develop and implement tools to support a range of housing types including affordable housing options.

Goal

- G-6B** To participate with Clallam County and other entities in programs to increase the availability and affordability of public assisted housing and rental units as well as other affordable housing opportunities.

Policies

- P-6B.01** Participate in a county-wide housing task force comprised of representatives from government, financial institutions, business, construction, real estate, non-profit housing entities, and other citizens interested in housing issues. A major goal of the task force should be coordinating efforts to provide affordable housing, encouraging rapid review of low and moderate income housing projects throughout the County, and promoting public education and awareness regarding the need for and nature of affordable housing.
- P-6B.02** Cooperate with the county-wide housing task force and other agencies in assembling packages of publicly owned land, which could be used for low and moderate income housing and for shelter or transitional housing.
- P-6B.03** Cooperate with the County to promote innovative housing techniques and explore creative regulatory programs for the purpose of creating and preserving existing affordable housing opportunities. P-6B.04
- P-6B.04** Invite the Peninsula Housing Authority to participate in a variety of affordable housing opportunities and seek representation on the Peninsula Housing Authority and non-profit housing organizations.
- P-6B.05** Provide adequate low and moderate income housing opportunities within the Port Angeles Planning Area.
- P-6B.06** Support affordable housing by developing utility cost savings programs and the provision of transitional and temporary housing for the homeless and/or displaced families.



- P-6B.07** Designate specific medium and high density zones where increased building height limitations could be increased.

Goal

- G-6C** To use the 2019 Housing Action Plan as a guide and implementation tool for future City actions in support of providing available State supported financing options, municipal code revisions that promote innovative housing products and designs, incentive zoning, and renovation/rehabilitation of existing of the City's housing stock.

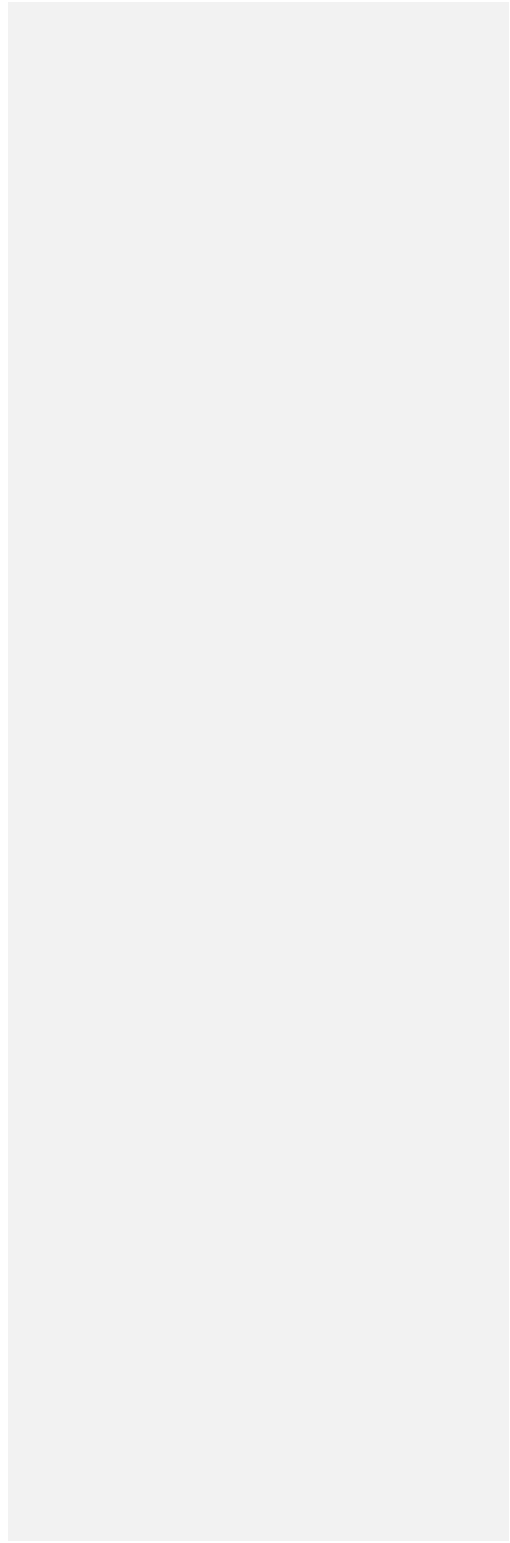
Policies

- P-6C.01** Encourage innovative housing development based on Port Angeles' forecasted demographic changes.
- P-6C.02** Designate timelines for planning actions that adequately address housing needs within the City and unincorporated UGA.
- P-6C.03** Promote housing renovation and rehabilitation.
- P-6C.04** Incentivize the provision of non-cash density offsets to assist in the development of affordable housing options.
- P-6C.05** Encourage the partnership and coordination of the City of Port Angeles, Clallam County, Peninsula Housing Authority, Lower Elwha Klallam Tribe, other local public agencies, and North Peninsula Builders Association to continue focusing on solving issues with the developed and provision of attainable housing on the North Olympic Peninsula.
- P-6C.06** Encourage the issuance of annual and periodic updates to the Housing Action Plan.
- P-6C.07** Develop ~~measurable~~measurable standards to assess the progress and implementation of the core recommendations of the Housing Action Plan.
- P-6C.08** Encourage high-density infill, affordable housing, and mixed-use development to increase the housing stock and increase walkability.
- P-6C.09** Decrease or remove parking minimums to allow higher occupancy land use.

Commented [ZT32]: Type 4, 6



DRAFT



Conservation

7

The Conservation Element establishes the importance of quality of life to the people of Port Angeles. A clean, healthy, and diverse natural environment along with a variety of historical and cultural amenities are critical elements of a high quality community.

As with other elements, this chapter provides a goal, policy and action framework to support Port Angeles' long-range vision related to conservation. This includes efforts to optimize the city's relationship with its natural historic, and cultural setting by protecting and enhancing the environment and identifying and conserving sites and entities of historic or cultural significance.

Actions related to conservation goals and policies are included in Chapter 11, Implementation.

■ Conservation Goals & Policies

Goal

- G-7A** To promote sustainable development and land use that is compatible with the overall natural environment, historical, archaeological, and cultural amenities.

Policies

- P-7A.01** Require all development, including the location and design of all structures and open space areas, to be compatible with the unique physical features and natural amenities of the land and complement the environment in which it is placed, while recognizing the rights of private ownership.
- P-7A.02** Promote compatibility between the land and its use by regulating the intensity of the land use.
- P-7A.03** Adopt development criteria, which promote the use of innovative design techniques to provide for the use of the land in a manner compatible with any unique physical features or valuable natural, historical, and/or cultural amenities.
- P-7A.04** Building density should decrease as natural constraints increase.
- P-7A.05** Establish minimum standards for development of properties, which contain or adjoin critical areas for the purpose of protecting such areas and enhancing their natural functions.
- P-7A.06** Regulate site design, preparation, and development to avoid or minimize damage to wetlands and other environmentally sensitive areas.
- P-7A.07** Use regionally consistent requirements for industrial and commercial sewer discharge pretreatment and require new indirect dischargers to locate where appropriate sewer service can be made available.
- P-7A.08** Designate open space areas to preserve major or unique physical features, to serve as natural greenbelts and wildlife corridors, and to establish an urban edge to the PAUGA.
- P-7A.09** Coordinate its environmental regulations with County, State, and Federal regulations to simplify the permitting process and to reduce associated costs to the land user.
- P-7A.10** Review all new development for impacts on climate change and adaptation to sea level rise.
- P-7A.11** Implement site-specific requirements for individual development proposals to mitigate any negative impacts created by the development, particularly to an area identified as an environmentally sensitive area.



Goal

- G-7B** To protect and enhance the area's unique physical features, its natural, historical, archaeological, and cultural amenities, and the overall environment.

Policies

- P-7B.01** Maintain and preserve the City's unique physical features and natural amenities, such as creeks, streams, lakes, ponds, wetlands, ravines, bluffs, shorelines, and fish and wildlife habitats.
- P-7B.02** Promote and highlight Port Angeles' plentiful natural beauty, amenities and cultural history.
- P-7B.03** Recognizing the functions and values of wetlands, the City should strive to achieve no net loss of wetlands.
- P-7B.04** Preserve uniquely featured lands, which still exist in their natural states and which are notable for their aesthetic, scenic, historic, or ecological features. Prohibit any private or public development, which would destroy such qualities, or would subject features to damage from climatic change, while recognizing the rights of private ownership.
- P-7B.05** Enhance and preserve the quality of the City's air and water as two of its unique physical features.
- P-7B.06** Protect air and water quality by minimizing pollution from new and existing sources including climatic change impacts.
- P-7B.07** Develop and implement a plan to improve water quality, which includes measures to reduce and minimize stormwater pollutants and combined sewer overflow pollutant discharges.
- P-7B.08** Maintain and enhance the quality of water resources through the regulation of clearing, grading, dumping, discharging, and draining and the provision of flood and erosion control measures and regulations to protect wetlands and other environmentally sensitive areas.
- P-7B.09** Protect water quality and prevent erosion through the retention of existing vegetation.
- P-7B.10** Encourage identification, preservation, and restoration of sites and structures that have historical or cultural significance.
- P-7B.11** Give precedence to long-term environmental impacts and benefits over short-term environmental impacts and benefits.
- P-7B.12** Promote and utilize environment enhancing conservation practices. Those practices may include waste reduction, use of energy efficient and conserving materials, and energy conservation techniques and should also encourage the development and use of alternative forms of energy and transportation.



- P-7B.13** Reference the most recently adopted Washington State Citations of Recommended Sources of Best Available Science for Designating and Protecting Critical Areas and other research identified as more locally appropriate and applicable when available as Best Available Science in the Critical Areas Ordinance.
- P-7B.14** Avoid adverse impacts to archaeological sites by following and requiring best management practices for archaeological preservation.
- P-7B.15** Publicly recognize the many values provided by trees in an urban setting and identify opportunities to plant trees.
- P-7B.16** Establish and implement an urban tree management program intended to retain and/or restore the overall tree canopy in the city by using plant materials as a unifying element and tool to protect the health, safety and welfare of the public, using the environmental services provided by trees to mitigate the negative effects of impervious surfaces and vehicular traffic such as increased temperatures, airborne particulates, carbon dioxide, noise, and stormwater runoff.
- P-7B.17** Plant trees along residential streets, in parking lots, and in other areas as opportunities arise. Trees should be retained whenever possible and maintained using Best Management Practices as appropriate for each tree type.
- P-7B.18** Seek strategies and technologies which reduce greenhouse gas (GHG) emissions by city facilities and operations.
- P-7B.19** Promote the use of alternative energy, energy conservation technology, and smart energy grid.

Goal

- G-7C** To promote community awareness and education of the importance and responsible use of our environmental, historical, and cultural amenities, with a focus on minimally impacting these resources.

Policies

- P-7C.01** Inform the public concerning the long-term benefits of protecting and improving the quality of the region's air, land, and water.
- P-7C.02** Encourage the development and implementation of environmental, historical, and cultural awareness programs which focus on local and regional issues, including climate change impacts and preparedness.



Goal

- G-7D** To preserve and enhance the City's shoreline, its natural vegetation and wildlife and to mitigate for present and planned impacts in a manner consistent with the State Shoreline Management Act and the City's Shoreline Master Program.

Policies

- P-7D.01** Preserve shoreline areas for future generations by restricting or prohibiting development that would interfere with the shoreline ecology or irretrievably damage shoreline resources.
- P-7D.02** Maintain and restore riparian vegetation in shoreline areas and on tributary streams, which affect shoreline resources wherever possible.
- P-7D.03** Employ techniques to rehabilitate degraded shorelines for the purpose of shoreline stabilization and habitat enhancement wherever possible.
- P-7D.04** Preserve and protect aquatic habitats including shellfish habitat, and important marine vegetation by periodically evaluating and adapting fish and wildlife habitat policies and codes to address and mitigate climate risks, should be wherever possible.
- P-7D.05** Development patterns and densities on lands adjacent to shorelines should be compatible with shoreline uses and resources and reinforce the policies of the Shoreline Management Act and the City's Shoreline Master Program.
- P-7D.06** Utilize common utility corridors for urban service facilities located in shoreline areas.
- P-7D.07** Designate an adequate shoreline area for water-oriented commercial and industrial development based on the Land Use Element.
- P-7D.08** Locate shoreline uses and activities to avoid environmentally sensitive and ecologically valuable areas and to insure the preservation and protection of shoreline natural areas and resources.
- P-7D.09** Locate utility facilities and rights-of-way outside of the shoreline area wherever possible, and if unavoidable, protect shoreline ecology and resources.

Commented [ZT33]: Type 2, 3, 5

Goal

- G-7E** Preserve culturally important resources and practices that are at risk to climate impacts such as protecting salmon populations from flooding. Protect and restore cultural and historical sites from coastal flooding and bluff erosion due to sea level rise.

Commented [ZT34]: Type 2, 6

Policies

- P-7E.01** Coordinate and partner with Tribal partners to implement regional climate resilience policies that protect culturally significant resources, land, and artifacts.
- P-7E.02** Protect, enhance, and restore ecosystems in order to meet tribal treaty rights and conserve culturally important consumptive and non-consumptive

Commented [ZT35]: Type 2

resources including foods, medicinal plants, and materials that could be adversely impacted by climate change.

Commented [ZT36]: Type 2

Goal

G-7F Plan for and respond to extreme heat hazards on human health such as vector-borne illnesses, increased pollution, and increased heat-related illnesses, deaths, and hospitalizations.

Policies

P-7F.01 Consider habitat reduction and population control for arthropod disease vectors (e.g., mosquitos, ticks) and zoonotic disease reservoirs (i.e. rodents) using integrated pest-management methods.

Commented [ZT37]: Type 2, 6

P-7F.02 Develop and implement a wildfire smoke resilience strategy in partnership with local residents, emergency management officials, regional clean air agency officials, and other stakeholders.

Commented [ZT38]: Type 2, 6

P-7F.03 Protect air and water quality by minimizing pollution from new and existing sources and those exacerbated by climate change drivers like extreme heat, flooding, and sea level rise.

Commented [ZT39]: Type 1, 2, 5

Goal

G-7G Protect and preserve ecosystems by increasing resilience to climate hazards such as heat, flooding, drought, sea level rise, and reduced snowpack that pose a risk to forest productivity, pest outbreaks, fish and wildlife habitats, and water quality.

Policy

P-7G.01 Develop an identification and monitoring program for urban trees to analyze risks or impacts of pests and disease, factoring in climate impacts.

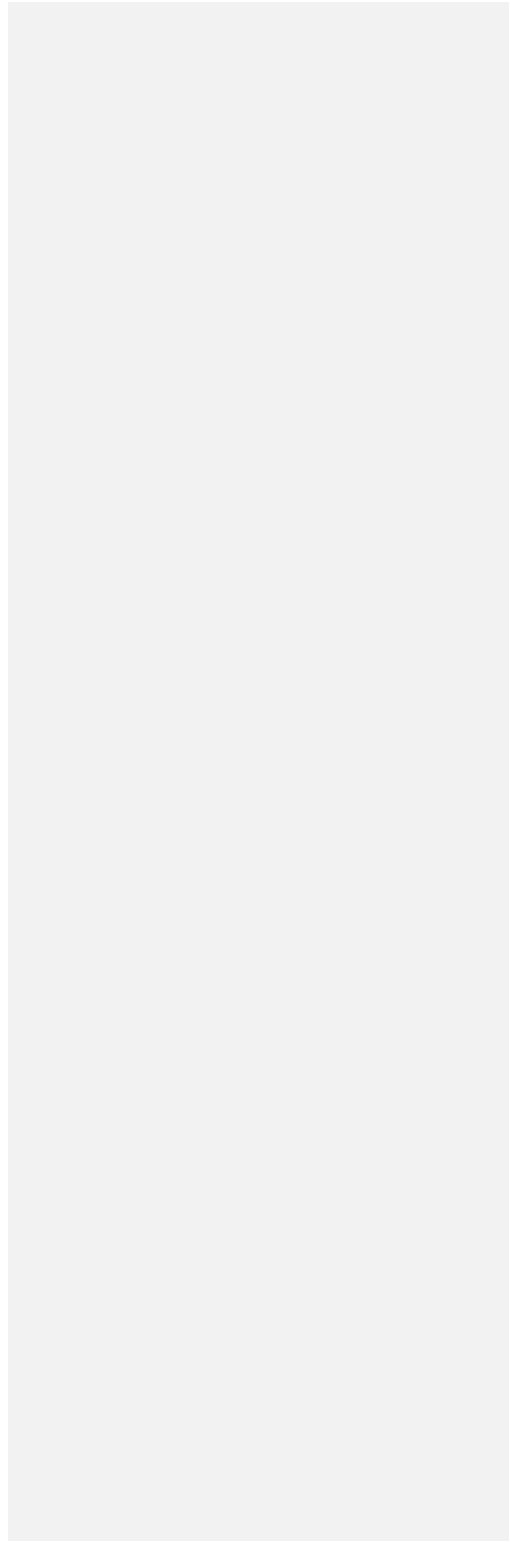
Commented [ZT40]: Type 2, 5

Goals & Policies

Goals & Policies



DRAFT



|

(This page intentionally left blank)

DRAFT

Capital Facilities

8

The Capital Facilities Element consists of two parts. The first part is the listing of goals and policies regarding the City's provision of urban services and its planning of capital improvements. The second part is the Annual Capital Facilities Plan which is adopted separately from the Comprehensive Plan but is included as part of the plan as an attachment.

The Comprehensive Plan defines urban services in its definition section, which includes a listing of the following services and facilities, which should be available in an urban environment:

- Surface transportation facilities
- Water facilities
- Sewer facilities
- Stormwater facilities
- Solid waste facilities
- Parks and recreational facilities
- Emergency services (police, fire and medical response)

Public Facilities within the City of Port Angeles managed by outside agencies:

- Public schools facilities

- Regional facilities (libraries, corrections, and mass transit).

DRAFT

The following goals and policies provide guidance on how these services and facilities should be provided. This includes the establishment of minimum levels of service standards for each service. The policies also call for the development of individual comprehensive service and facility plans which take an in-depth look at the current status of each service and the projected future demand for each service and which include a financial feasibility analysis on the costs of providing each service.

The Capital Facilities Plan is a six-year plan, which establishes how, where, and when the City will develop the facilities necessary to provide its various services.

DRAFT



■ Capital Facilities Goals & Policies

Goal

- G-8A** To provide and maintain safe and financially feasible urban services and capital facilities at or above stated levels of service to all City residents and the general public.

Policies

- P-8A.01** The Comprehensive Plan should establish general level of service standards for each urban utility and service. Such standards should be used to determine the impacts of development.
- P-8A.02** Develop individual comprehensive service and facility plans for the following capital facilities and/or services:
- *Transportation, including streets, and non-motorized (bikeways and pedestrian walkways),*
 - *Water system,*
 - *Sanitary sewer system,*
 - *Electrical system,*
 - *Parks and recreation services, and*
 - *Emergency services (police, fire, and medical response).*
- P-8A.03** Each comprehensive service and facility plan should be consistent with the Comprehensive Plan, the County-Wide Planning Policy, and the State Growth Management Act.
- P-8A.04** At a minimum, ensure the continuation of established level of service standards for all urban utilities and services to the extent and in the manner provided herein.
- P-8A.05** Cooperate with the appropriate private and/or public agencies to develop individual comprehensive service and facility plans for each of the following utilities and/or services:
- *Telecommunications,*
 - *Schools,*
 - *Mass transportation, and*
 - *Solid waste collection and disposal.*
- P-8A.06** Create and maintain comprehensive service and facility plans consistent with the general level of service standards established in the Comprehensive Plan and establish detailed level of service standards which, at a minimum, meet all local, state and federal health and safety requirements.



Establish desired level of service standards and should include an inventory of current facilities, measurements of current and future service capacities, the determination of future service and facility improvements necessary to serve the twenty-year vision of the Comprehensive Plan Land Use Map, and a financial feasibility analysis.

- P-8A.07** Create and maintain comprehensive service and facility plan for streets and non- motorized facilities (bikeways, trails, and pedestrian walkways) that include specific actions and requirements for bringing into compliance any street facilities that fall below the required level of service, including demand management strategies which encourage reduced reliance on single occupant vehicle trips and encourage use of alternate modes of transportation such as the bicycles, walkways, and transit riding with incentive programs for and from local businesses.
- Include a future US 101 corridor to meet long- term local and regional non-motorized transportation needs.
- P-8A.08** The City should require concurrency and standards be met at the time of new development for the following utilities and services:
- *Paved streets, curbs, and sidewalks*
 - *Water service,*
 - *Sanitary sewer service,*
 - *Electrical service*
 - *Solid waste collection,*
 - *Stormwater management,*
 - *Telecommunications services, and*
 - *Emergency services (police, fire and emergency medical response).*
- P-8A.09** Require the following services and facilities within six years from the time of development:
- *Parks and recreation services and facilities, and*
 - *Transit system.*
- P-8A.10** Adopt an annual Capital Facilities Plan consistent with the Comprehensive Plan and State Growth Management Act. The Capital Facilities Plan's financing schedule may be corrected, updated, or modified without being considered as an amendment to the Comprehensive Plan, following a public hearing before the City Council.
- P-8A.11** Adopt a Comprehensive Parks and Recreation Plan consistent with the Comprehensive Plan and the Growth Management Act as an Element of the Comprehensive Plan.
- P-8A.12** Require sidewalks be included in all development and redevelopment proposals where sidewalks do not exist at the time of application for development. Permeable materials are preferred for sidewalk construction where feasible.



- P-8A.13** Develop and implement an Urban Forestry Program to properly manage street trees, park trees, and forested environmentally sensitive areas located within the City.
- P-8A.14** Create a unified, coherent design element for signage, street lighting, traffic control devices, and similar structures to be used throughout the City and specifically in the downtown area as a method for improved way finding and place identification for visitors and residents alike.
- P-8A.15** Consider climatic change impacts and adaptation strategies in planning and designing capital facilities.
- P-8A.16** Development shall be served with adequate transit service as determined in the comprehensive service and facilities plan for transportation within six years from the time of development.
- P-8A.17** Deny any development that will not be served at or greater than a citywide level of service standard of 10 acres of parks per 1,000 population within six years from the time of development.
- P-8A.18** Deny any development that will not be served at or less than the following level of service standards at the time of development.
- *Police 600 persons per one officer*
 - *Fire Four-minute response time or residential sprinkler system installation*
- P-8A.19** Deny any development that will not be served with solid waste collection service at or less than a city-wide level of service standard of 400 pick-up accounts per 1000 population within six years from the time of development.
- P-8A.20** Participate with the County in the development, maintenance, and implementation of a regional solid waste plan, which addresses collection, disposal, and recycling of solid waste.
- P-8A.21** Consider the cumulative effect of development on the City's need for adequate public service buildings.
- P-8A.22** Consider projected climatic change impacts and adaptation strategies to determine whether adequate services can be provided into the future, prior to approving any development.
- P-8A.23** Support public education and Peninsula College, including initiatives for rebuilding schools.
- P-8A.24** Consider level of service standards for development based on the School District's projected enrollment figures and residential growth as provided for in the Land Use Element of the Comprehensive Plan:
- *High School 125 square feet of permanent, appropriate educational space per student*
 - *Middle School 104 square feet of permanent, appropriate educational space per student*
 - *Elementary School 100 square feet of permanent, appropriate educational space per student*



City shall not approve any development that is not served with water service at or greater than the following level of service standards at the time of development

Goal

- G-8B** To provide urban streets and utilities at minimum levels of service for all city residents and the general public.

Policies

- P-8B.01** All arterial streets shall function at an average daily Level of Service (LOS) of D or better.
- P-8B.02** Development on all arterial streets and any other streets identified as school walking routes should include pedestrian sidewalks on both sides of the street.
- P-8B.03** The City shall not approve any development that is not served with water service at or greater than the following level of service standards at the time of development:
- *Single family units: 2 gallons per minute @ 30 psi
(Fire - 1000 gallons per minute @ 20 psi for single family residential > 3,600 square feet)
(Fire - 500 gallons per minute @ 20 psi for single family residential < 3,600 square feet)*
 - *Multi-family units: 1 gallon per minute @ 30 psi (fire per Uniform Fire Code)*
 - *Commercial: per Uniform Fire Code*
 - *Industrial: per Uniform Fire Code*
- P-8B.04** The City shall not approve any development that is not served with sewer service at or greater than a level of service standard of 300 gallons per day per person at the time of development.
- P-8B.05** The City shall not approve any development that is not served with electrical service at or greater than a level of service standard of 118 volts (120 volt base) at the time of development.
- P-8B.06** The City shall not approve any development that increases a site's post-development stormwater run-off beyond that allowed by the Department of Ecology Stormwater Management Manual for Western Washington as adopted by the City.



P-8B.07 The City should not approve any development that cannot be served with telecommunications service at or greater than the following level of service standards at the time of development:

Telephone	
Residential	1 service per unit
Commercial	1 service per business
Industrial	1 service per business
Cable Television	
Residential	1 service per unit
Commercial	0 service per business
Industrial	0 service per business
Internet	
Residential	1 service per unit
Commercial	0 service per business
Industrial	0 service per business

P-8B.08 Highways of Statewide Significance (HSS) should function at Level of Service (LOS) D or better, consistent with the Regional Transportation Plan (RTP).

P-8B.09 Develop a Capital Facilities Plan list, with public input, for prioritizing pedestrian walkway needs.

P-8B.10 Seek funding to increase the provision of sidewalks in already developed areas where sidewalks do not occur.

Goal

G-8C To participate with the County, State, and Federal governments as well as other public agencies to provide adequate regional public services such as schools, highways, tie-ins to regional communication networks, libraries, and correctional facilities.

Policies

P-8C.01 The City should cooperate with the County and the community's health care providers to ensure quality health care facilities within the City that serve the region as a whole.

P-8C.02 The City should cooperate with the County in planning regional library facilities within the City.

P-8C.03 The City should cooperate with the County in planning for adequate correctional facilities.



P-8C.04 Essential public facilities of a county-wide or statewide nature must meet existing state laws and regulations requiring specific siting and permit requirements consistent with the City's Comprehensive Plan.

Goal

G-8D To reduce the amount of impervious surface created by new developments and thereby reduce stormwater management costs and environmental impacts to the City and its natural resources, reduce development costs to private property owners, and provide safe and more attractive streets through traffic calming, safe pedestrian amenities, and improved street edge landscaping.

Policies

P-8D.01 Revise existing urban development standards in low density residential areas to include low impact development standards for street, pedestrian and non-motorized access, sewer, and fire suppression to more nearly reflect the needs of suburban densities and conditions in outlying undeveloped areas of the City and PAUGA.

P-8D.02 The City should invest in Green Infrastructure, Low Impact Development (LID), and similar technologies to maintain and enhance environmental quality.

P-8D.03 Encourage the use of Low Impact Development stormwater management techniques (such as vegetated roofs, permeable pavement, rainwater harvesting, and bioretention) for all new developments.

Commented [ZT41]: Type 1, 2, 3, 4, 5

Goal

G-8E Prepare for the increased demand for solid waste and recycling collection and disposal.

Commented [ZT42]: Type 2

Policy

P-8E.01 Participate with the County in the development, maintenance, and implementation of a regional solid waste plan, which addresses collection, disposal, and recycling of solid waste.

Commented [ZT43]: Type 1

Goal

G-8F Enhance emergency services to address response to extreme heat, drought, flooding, sea level rise, and wildfire.

Commented [ZT44]: Type 2, Type 3

Policies

P-8F.01 Develop resilience hubs — community-serving facilities augmented to support residents.

P-8F.02 Coordinate resource distribution and services before, during, and after a hazard event.

Commented [ZT45]: Type 2, 6

P-8F.03 Identify safe evacuation routes for earthquakes, tsunamis, high-risk debris flow, and landslide areas.

P-8F.04 Improve knowledge of earthquake, tsunami, and landslide hazard areas and understanding of vulnerability and risk to life and property in hazard-prone areas.

P-8F.05 Evaluate current earthquake, tsunami, and landslide warning systems to ensure effectiveness and efficiency and increase coordination between local jurisdictions.

P-8F.06 Strengthen response to earthquakes, tsunamis, and landslides by incident management teams to increase resilience.

P-8F.07 Create Community Wildfire Preparedness Plan.

P-8F.08 Provide education and outreach to residents to ensure their personal preparedness in the event of a wildfire.

P-8F.09 Enhance Emergency Services to increase efficiency of wildfire response and recovery activities.

P-8F.10 Complete a new wildfire assessment that Wildland Urban Interface areas.

P-8F.11 Development and dissemination of maps relating to the fire hazard to help educate and assist builders and homeowners in being engaged in wildfire mitigation activities, and to help guide emergency services during response.

P-8F.12 Improve brush clean-up operations to decrease wildfire fuel.

P-8F.13 Improve current emergency evacuation routes. Site new emergency evacuation routes to increase route redundancy in case the current emergency evacuation route is affected by the emergency.

Commented [ZT46]: Type 2, 4, 5, 6

Goal

G-8G Increase municipal cleanup and refuse capacity to prepare for increased need following extreme precipitation events.

Policy

P-8G.01 Develop and implement a strategy to expedite the removal of waste (e.g., downed tree limbs and buildings blocking roads and streams) during and after a disaster incident to reduce the risks of subsequent fire, flood, injury, and disease vectors.

Commented [ZT47]: Type 2, 6

Goal

G-8H Reduce waste-related greenhouse gas emissions from wastewater and landfills.

Policies

P-8H.01 Evaluate wastewater facility to reduce greenhouse emissions and build resilience to climate impacts such as landslides

P-8H.02 Maximize the co-generation and on-site utilization of natural gas from

anaerobic digesters and other methods of harnessing energy in wastewater treatment. This will reduce vulnerability to power and fuel shortages, as well as reduce emissions.

P-8H.03 Reduce vulnerability of access routes to the treatment plant and consider identifying alternative routes should primary routes be compromised.

Commented [ZT48]: Type 2, 4, 6

Goal

G-8I Prepare conservation strategies and protect water quality to increase resilience to drought, sea level rise, and reduced snowpack.

Policy

P-8I.01 Water supply monitoring & enhancement to increase resilience during drought periods.

Commented [ZT49]: Type 2, 5

P-8I.02 Reduce water consumption through education and incentive programs. For example:

- Create a smart grid water use system and share data with consumers to increase conservation.
- Promote and incentivize smart irrigation technologies for golf courses and parks.
- Update water rates to discourage watering lawns.
- Provide incentives for efficient food cultivation.

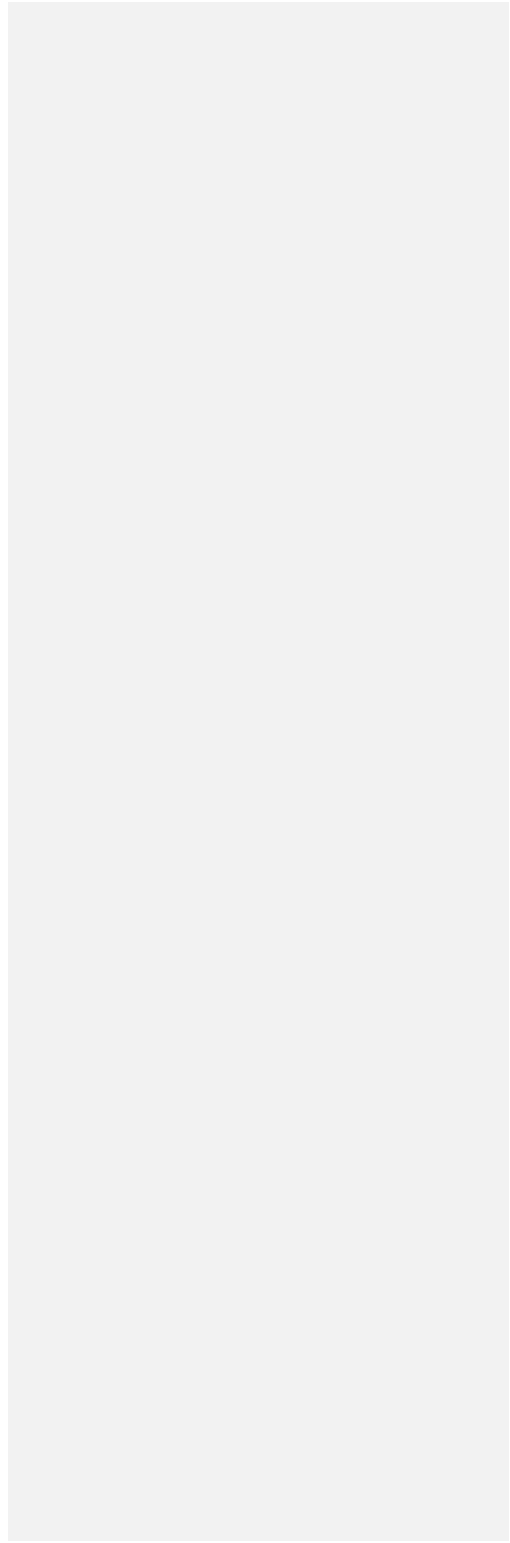
Commented [ZT50]: Type 2, 3, 5

P-8I.03 Maintain and enhance the quality of water resources through the regulation of clearing, grading, dumping, discharging, and draining and the provision of flood and erosion control measures and regulations to protect wetlands and other environmentally sensitive areas. Use adaptive management practices and best available climate science and projections to inform these efforts.

Commented [ZT51]: Type 1, 2, 3, 5



DRAFT



Economic Development 9

The intent of the Economic Development Element is to guide decision-making and investments that diversify and strengthen the local economy.

- Optimizing the city's relationship with its natural setting
- Supporting safe, attractive and character-rich neighborhoods
- Creating a more dynamic, successful downtown
- Improving Port Angeles' standing as a regional hub for business and Port-related enterprises.
- Recognizing and supporting the economic impact of the college, Homeland Security, and Department of Defense presence.

■ Economic Development Goals & Policies

Goal

- G-9A** To create and maintain a balanced and stable local economy with full employment and emphasis on strengthening the community's traditional natural resource related industries as well as diversifying the overall economic base.

Policies

- P-9A.01** Remain a major economic center on the North Olympic Peninsula, meeting regional and local needs.
- P-9A.02** Promote long-term economic stability by encouraging businesses and industries to invest in modernization and environmentally sound technology.
- P-9A.03** Promote the diversification of the community's economic base by encouraging the location, retention, and expansion of local small and medium sized businesses.
- P-9A.04** Promote the "traditional downtown feeling" of retail, dining, arts, culture, and entertainment oriented activities that are attractive to both tourists and local residents.
- P-9A.05** Develop sufficient utilities, improve traffic circulation, and identify environmental constraints in the airport industrial area in cooperation with other governmental agencies.
- P-9A.06** Encourage training and educational opportunities, which strengthen and increase the variety of skills available in the work force.
- P-9A.07** Promote the motivation and availability of the community's work force as a major economic development strength.
- P-9A.08** Encourage inter-jurisdictional discussion and cooperation with other governmental agencies to foster the economic development of the region and provide opportunities for civic cooperation by coordinating and supporting local non-profits, associations, and community service organizations to support economic development.
- P-9A.09** Work with other community organizations in developing an effective business assistance program directed toward the commercial business owner.
- P-9A.10** Support continued development of a strong marine related industry in the Port Angeles Harbor.
- P-9A.11** Promote the sustainability of the existing art and culture industry encouraging community participation and involvement. Enhancement of the creative economy contributes to the overall health of the community.
- P-9A.12** Encourage businesses with low carbon footprints.



- P-9A.13** Consider projected climatic change impacts and adaptation strategies when encouraging new businesses to establish in Port Angeles.
- P-9A.14** Develop an economy which provides opportunities for Port Angeles' vulnerable and at-risk community members.
- P-9A.15** Invest in training and education for local residents, by providing access to state-of-the-art technology and training opportunities.
- P-9A.16** Encourage and incentivize youth entrepreneurship as well as jobs and businesses that attract young families.
- P-9A.17** Attract and retain businesses and industries which create family wage jobs for local residents.
- P-9A.18** Prioritize the airport as major economic asset and identify specific incentives to attract commercial services.
- P-9A.19** Encourage the location and support for adequate venues for community meetings, shows, music art, hobby and user groups, and professional and business meetings and particularly supporting the location of low-cost places where people (especially young people) can congregate and talk, and ensure that these have up-to-date communication facilities.
- P-9A.20** Recognize art, architecture, music, and performance as important community resources and continue to encourage and support cultural activities.
- P-9A.21** Support decorating public spaces with more art from the community.
- P-9A.22** Encourage the design of public spaces that encourage people to interact.
- P-9A.23** Support the concept and encourage the establishment of Maker's Spaces. (See definition) Public spaces where people make things and collaborate on projects, spaces are usually equipped with tools, 3-D printers, computers, design software, art and craft tools and supplies.

Goal

- G-9B** To have a healthy local economy that co-exists with the community's high quality of life through the protection, enhancement, and use of the community's natural, historical, and cultural amenities.

Policies

- P-9B.01** Promote the region's high quality environment and available natural and cultural resources as factors in attracting and retaining business, industry, and individual enterprises.
- P-9B.02** Promote the community's quality public school system and its diversity of other educational opportunities as factors in attracting and retaining business and industry.



- P-9B.03** Encourage the enhancement of the existing four-year community college through such means as the expansion of its technical curriculum and additional four year degree opportunities.
- P-9B.04** Promote development of planned office, business, and industrial parks, while conserving unique physical features of the land and maintaining compatibility with other land uses in the surrounding area.
- P-9B.05** Encourage the availability of housing that meets the needs of the entire spectrum of the community's residents.
- P-9B.06** Recognize, preserve and promote its historic and cultural properties as a measure of its quality of life.
- P-9B.07** Support landscaping and detailing of the streetscape at the City's east and west entries.
- P-9B.08** Utilize the Climatic Change Preparedness Plan in attracting businesses, to demonstrate a proactive approach to climatic change in the area.
- P-9B.09** Encourage and pursue economic development with positive environmental consequences, including non-polluting industries eco-friendly business, and low carbon footprints.

Goal

- G-9C** To create and promote a strong tourism industry for Port Angeles, as well as to recognize and support existing and prospective tourism attractions.

Policies

- P-9C.01** Support improved access to the Olympic National Park, particularly to Hurricane Ridge.
- P-9C.02** Work to enhance the public use of Ediz Hook.
- P-9C.03** Take a leading role in enhancing visitors' first impression of the community by maintaining and upgrading the City's public facilities, green infrastructure, and strengthen the nuisance abatement program.
- P-9C.04** Support development of an electric vehicle (EV) charging station network and EV maintenance facilities around the Olympic Peninsula.
- P-9C.05** Support tourism and recreation activities which highlights Port Angeles' natural, cultural and historical amenities.

Goal

- G-9D** To strengthen and enhance the restoration and reinvigoration of our downtown historic buildings, infrastructure improvements, and beautification projects.



Policies

P-9D.01 Consider best available science on sea level rise and recommended mitigation and adaptation strategies in the development of downtown.

Goal

G-9E Create and maintain economic growth by supporting a diverse and balanced local economy. Prepare for changes in recreation due to heat, wildfire, and reduced snowpack. Protect businesses, travel, and shipping routes with increased infrastructure resilience.

Goals & Policies

Commented [ZT52]: Type 2, 6

Policies

P-9E.01 Ensure that the jurisdiction's Comprehensive Emergency Management Plan responds to the impacts of climate change and identifies roles and responsibilities to ensure a sustainable economic recovery after a disaster.

Commented [ZT53]: Type 2, 6

P-9E.02 Encourage businesses with low carbon footprints by providing fee reductions, permit facilitation, and/or implementing land use code changes, among other strategies.

Commented [ZT54]: Type 1, 2, 5

P-9E.03 Promote long-term economic stability by encouraging businesses and industries to invest in modernization and environmentally sound, green technology.

Commented [ZT55]: Type 1, 2, 5

P-9E.04 Assess climate migration impacts with forecasting every 5 years. Integrate those findings into the Comprehensive Plan, infrastructure plans, revenue and expense forecasting, and housing assessments.

Commented [ZT56]: Type 2



(This page is intentionally left blank)

DRAFT



Parks & Recreation

10

The intent of the Park Element is to provide a guide for the development and management of City parks in Port Angeles. The goal and policy framework that follow provide direction in realizing Port Angeles' vision regarding parks and recreation - including:

- Optimizing the city's relationship with its remarkable natural setting
- Supporting a wide range of recreational opportunities available to all
- Creating vibrant, well-valued neighborhoods with access to parks, trails and natural areas
- Sustaining Port Angeles' rich arts and cultural heritage and overall sense of community.

■ Parks & Recreation Goals & Policies

Goal

- G-10A** To acquire, develop, renovate and maintain a sustainable system of parks, recreational facilities, and open spaces to ensure that the contributions of natural resources and recreation to human well-being are maintained and recognized as a value.

Policies

- P-10A.01** Provide Port Angeles with a diversity of open spaces, parks, and recreation facilities and programs appropriately distributed throughout the City.
- P-10A.02** Ensure that equality is achieved to the extent possible in the types and variety of facilities, quality of maintenance, and the range of recreation services provided.
- P-10A.03** Retain and reflect the natural beauty that attracts visitors, business, and residents to the area.
- P-10A.04** Forge effective partnerships and strengthen ties with other public, private, and non-profit providers including providing high quality recreational opportunities.
- P-10A.05** Identify waterfront improvements to increase marine transportation and recreation.
- P-10A.06** Identify appropriate locations for small (pocket) parks, community gardens and food forests throughout the community and integrate them into its Parks system.
- P-10A.07** The City should continue to provide or participate with private sponsors to provide high quality recreational opportunities.
- P-10A.08** Continue to participate as a partner in the extension of the Olympic Discovery Trail through the City to the western City limits.

Goal

- G-10B** To enhance the quality of life in the community by providing facilities, services, and programs that offer positive opportunities for building healthy, safe, and productive lives to the broadest segment of the population.

Policies

- P-10B.01** Provide consistently high-quality recreational experiences to residents and visitors through a wide variety of park types and features.



- P-10B.02** Strive for excellence through efficient, accurate, and skillful performance in every process, service and product delivered by the Parks and Recreation providers.
- P-10B.03** Keep citizens involved and informed about parks and recreation issues, services, and family friendly features and amenities.
- P-10B.04** Manage park facilities in a manner that will ensure public safety, identify family friendly features and amenities, and keep the parks free of misuse to the greatest extent possible and resulting in a sustainable and resilient park system.
- P-10B.05** Incorporate health and nutrition into parks and recreation programming.
- P-10B.06** Provide high quality services, emphasize the design of park areas to reduce long-term maintenance and operating costs, and implement improved technology to conserve limited resources such as water, power and people.
- P-10B.07** Provide programs and opportunities that are sensitive to the needs of all of its citizens, including those with limited financial resources, disadvantaged youth, the elderly, the disabled, and those with other special needs.

Goal

- G-10C** To establish and protect a visual character of the community through open spaces, streetscapes, borrowed landscapes, and publicly-owned natural resource areas.

Policies

- P-10C.01** Strive to protect and retain the natural beauty of the area.
- P-10C.02** Supplement and enhance the visual attractiveness of the city through the use of formal landscaping in street medians, city entryways, and along sidewalks, as well as the use of other public spaces, flower beds, and street trees. Emphasize use of planter strips with drought tolerant vegetation and bio-retention facilities.

Goal

- G-10D** To promote economic growth through recreational tourism and attract visitors and new business by enhancing the image of the community through beautification and recreation programs.

Policies

- P-10D.01** To encourage efficient transportation systems, support the use of shuttle services during events to move participants between venues.



Goal

- G-10E** To provide a system of walking trails and bicycle paths to complement and coordinate with the existing street system and provide recreational opportunities and physical activity while reducing the dependence on traditional automobile transportation.

Policies

- P-10E.01** The City should continue efforts to improve or provide access to Valley, Tumwater, Peabody, Ennis and White's Creeks through the development of an integrated trails system.

Goal

- G-10F** To encourage the development of parks and recreational opportunities for all residents of the City and to increase access to natural areas in a manner that minimizes adverse impacts and achieves the desired urban design of the City.

Policies

- P-10F.01** Preserve and maintain unique or major physical features contained within the boundaries of City parks and recreational areas for access and enjoyment by residents of the community.
- P-10F.02** Adapt parks and recreation facilities to reflect the risks of climate change including sea level rise, extreme heat, extreme precipitation, and drought. Prioritize actions based on the critical nature of the facility. Consider the relationship of facilities to emergency management and human health such as facilities used as community hubs. Consider business continuity and economic development, such as the wharf, beaches, and trails.

Commented [ZT57]: Type 2, 5



Implementation

11

The following pages (Table 11.01) list a series of actions supporting the goals and policies contained in this plan's elements, showcasing a range of undertakings identified to implement the community's long-range vision. These actions constitute a part of the corresponding elements. It is provided to help City staff and leadership track progress, coordinate and combine various actions where it makes sense to do so, and to help guide budgeting of work and improvements in a more realistic, strategic fashion. As with the rest of the plan, this table represents the input, expressed priorities and values of the community and its leadership.

Each listing includes columns identifying the anticipated timing of that action, as well as those primary agencies likely to be involved. These columns in no way obligate the City or identified partners to act or participate according to the timeframes described - rather, the table offers a means for the community to see, at a glance, its stated objectives in context of an intended timeframe.

A 2019 Comprehensive Plan amendment identified policies that were specific or action oriented enough to justify placement into Chapter 11 Table 11.01 as actions. These former policies have been placed under each associated element in this chapter and identified by a placeholder number XX. A future Comprehensive Plan Amendment or Update will include the full evaluation of each proposed action for language, intent, timeline, partners and given a formal number.

|

(This page intentionally left blank)

DRAFT



C= Complete
O= Ongoing
N = Not Complete

Measurable Actions

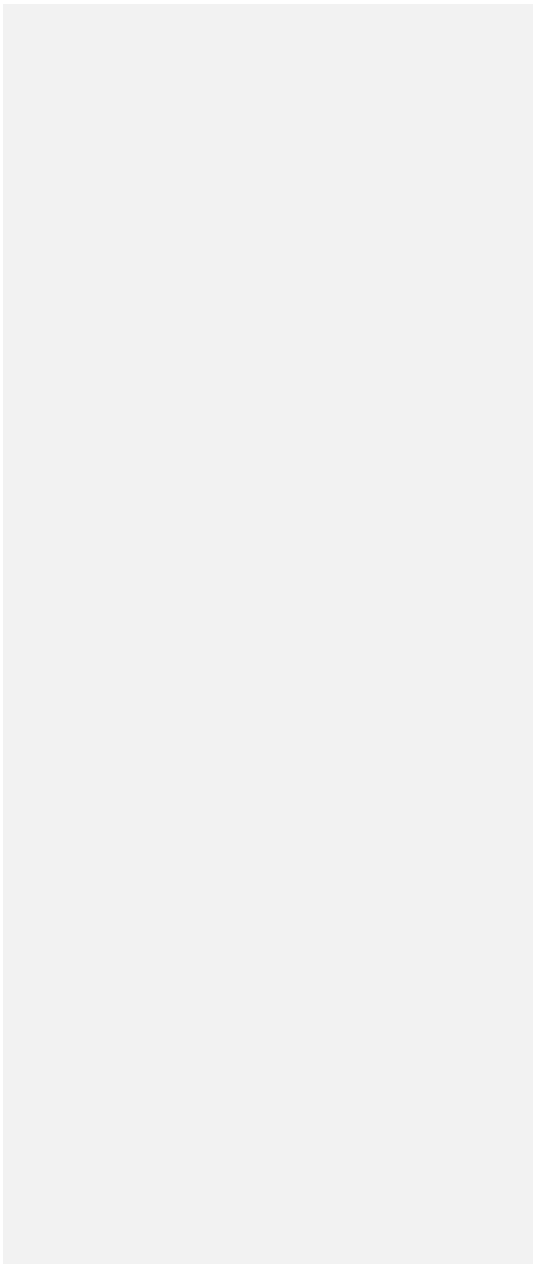
Number	Action	Short (0-2 yr.)	Medium (2-4 yr.)	Long (4+ yr.)	COPA	CLC	POPA	LEKT	Other	Action / Metric	Deliverable Date	Complete
Growth Management Act												
A-2.01	Periodically update the City's comprehensive plan as required by Washington State's Growth Management Act (GMA).	■	■	■	-					Ordinance Passed	June 30, 2024	O
A-2.02	Review and update the City's Buildable Lands Inventory on a biannual basis, helping inform land use decision-making.	■	■	■	-					Matrix Produced	December 21, 2018	O
A-2.03	Acquire no-protest annexation agreements for all utility connections occurring in the Port Angeles Urban Growth Area (PAUGA).	■	■	■	-	-				Number Agreements	N/A	O
A-2.04	Recommend expansion of the southwestern Urban Growth Area (UGA) to include twelve parcels located in an area bounded on the north by US 101; on the east by Old Joe Road (the western City limits at that location); on the west by the existing UGA boundary, and on the south by a line parallel to Old Joe Road right-of-way extended west to the UGA boundary. Also to be included are parcels 063017230050 and 063018120210.	■				-	-			Parcel mapped within UGA	December 31, 2019	O
Land Use												
A-3.01	Review and revise City development regulations for consistency with each major update of the Comprehensive Plan.	■	■	■	-					Ordinance Passed	December 31, 2024	O
A-3.02	Continue to develop programs encouraging the use of downtown for community events, gatherings, displays, and public markets..	■			-				PADA Farmers Market	Number of New Events	N/A	O
A-3.03	Research and develop a program for consideration addressing approaches to open space preservation, including: <ul style="list-style-type: none"> ■ Land banking ■ Transfer of Development Rights (TDR) ■ Purchase of Development Rights (PDR). 		■		-				North Olympic Land Trust	Ordinance Passed	December 31, 2020	N

Commented [ZT58]: To be updated for all actions
Commented [ZT59]: To be updated for all actions

Abbreviations: COPA = City of Port Angeles; CLC = Clallam County; POPA = Port of Port Angeles; LEKT = Lower Elwha Klallam Tribe; WSDOT - Washington State Department of Transportation; WA DAHP = Washington State Department of Archeology and Historic Preservation; WA DOE = Washington State Department of Ecology; SP = City of Port Angeles Strategic Plan 2017-2018; AIA = American Institute of Architects

DRAFT

City of Port Angeles | 1



C= Complete
 O= Ongoing
 N = Not Complete



Measurable Actions

Number	Action	Short (0-2 yr.)	Medium (2-4 yr.)	Long (4+ yr.)	COPA	CLC	POPA	LEKT	Other	Action / Metric	Deliverable Date	Complete
A-3.04	Review and update the City's Urban Services Standards and Guidelines to provide for development of low-impact trails in designated open spaces, including permeable materials where feasible.		■		●					Number of trail Miles Completed	December 31, 2021	O
A-3.05 (SP)	Adjust zoning to protect the prime commercial corridor	■			●					Ordinance Passed	December 31, 2017	C
A-3.06 (SP)	Rewrite sign code (less clutter, more character)	■			●					Ordinance Passed	December 31, 2019	N
A-3.07 (AIA)	Consider adoption of an overlay district for downtown to respond to sign, design, and parking issues.			■	●					Budget for Form Based Code	December 31, 2018	N
Transportation												
A-4.01	Design and develop the following segments of the Olympic Discovery Trail: <ul style="list-style-type: none"> ■ Marine Drive to 10th Street ■ City Pier along Railroad Avenue to Laurel Street ■ Other segments as funding and opportunity provide, coordinated with the City's park, street and trail systems. 	■	■	■	●		●	●	Peninsula Trails Coalition	<ul style="list-style-type: none"> ■ 100% Design ■ Grant Obtained ■ Number of Miles Complete 	<ul style="list-style-type: none"> ■ May 31, 2019 ■ December 31, 2018 ■ December 31, 2021 	O
A-4.02	Identify funding and implementation strategies for the Valley Creek Loop Trail, connecting the Valley and Peabody Creek corridors with the Foothills Trail system.		■		●	●			Washington State Parks	Grant Obtained	December 21, 2020	N
A-4.03	Review and update the City's Urban Services Standards and Guidelines, including direction for transportation facility improvements that: <ul style="list-style-type: none"> ■ Include including bike path development and maintenance, signage, and storage ■ Assess cost/benefits of bicycle-friendly infrastructure. 		■		●			Clallam Transit	Biannual Review Complete	December 31, 2018	O	

Abbreviations: COPA = City of Port Angeles; CLC = Clallam County; POPA = Port of Port Angeles; LEKT = Lower Elwha Klallam Tribe; WSDOT - Washington State Department of Transportation; WA DAHP = Washington State Department of Archeology and Historic Preservation; WA DOE = Washington State Department of Ecology; SP = City of Port Angeles Strategic Plan 2017-2018; AIA = American Institute of Architects



Measurable Actions

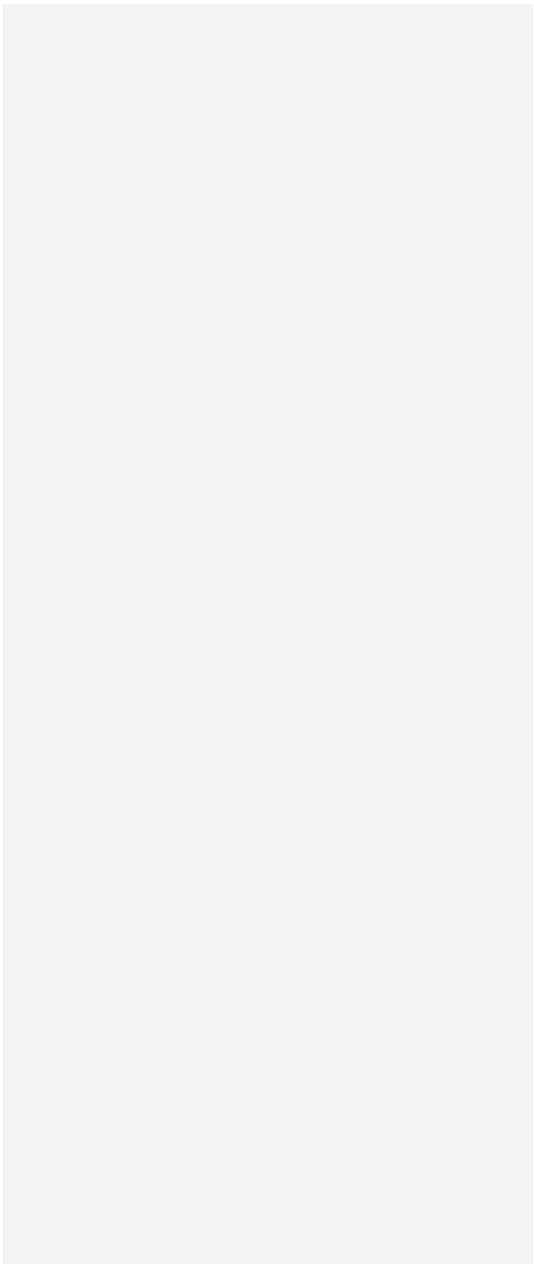
C= Complete
 O= Ongoing
 N = Not Complete

Number	Action	Short (0-2 yr.)	Medium (2-4 yr.)	Long (4+ yr.)	COPA	CLC	POPA	LEKT	Other	Action / Metric	Deliverable Date	Complete
A-4.04	Review and update the City's Urban Services Standards and Guidelines, encouraging public streetscape improvements including: <ul style="list-style-type: none"> ■ Street trees ■ Art and creative community-oriented beautification efforts ■ Pedestrian and bicycle amenities ■ Sidewalks on both sides of streets. 		■		-					Biannual Review Complete	December 31, 2020	O
A-4.05	Review and update the City's Urban Services Standards and Guidelines, helping: <ul style="list-style-type: none"> ■ Promote joint access and maintenance of driveways ■ Balance the needs for traffic movement and access to properties immediately adjacent to secondary and primary arterials. 		■		-					Biannual Review Complete	December 31, 2020	O
A-4.06	Develop a "Complete Streets" program for Port Angeles, helping identified travelways accommodate all modes of transportation as appropriate for the needs and conditions of each neighborhood or district.	■			-					Ordinance Passed	December 31, 2018	C
A-4.07	Prepare a study evaluating options for easterly access across Whites and Ennis Creeks in the vicinity of Golf Course Road.		■	■	-				WSDOT	Completed Report / Study	December 31, 2020	N
A-4.08	In coordination with the County, RTPO and state and federal agencies, study a future US 101 corridor alignment including evaluation of the Heart of the Hills Parkway and Coastal Corridor concepts. <i>(Route along Lauridsen Boulevard east of Race Street will not be considered.)</i>			■	-	-			WSDOT; Clallam Transit	Completed Report / Study	December 31, 2020	N
A-4.09	Plan and integrate the following into the Capital Facilities Plan: <ul style="list-style-type: none"> ■ Multi-modal street improvements along Edgewood Drive (south side of the airport), Lauridsen Boulevard, Airport Road (west side of the airport), and along Milwaukee Drive to Lower Elwha Road. 	■			-					Program as a CFP Item	December 31, 2018	N
A-4.10 (SP)	Review and assess progress per AIA Urban Design Study; consider proposals to transform First and Front Streets	■			-					Status Report	December 31, 2019	O

|

Abbreviations: COPA = City of Port Angeles; CLC = Clallam County; POPA = Port of Port Angeles; LEKT = Lower Elwha Klallam Tribe; WSDOT = Washington State Department of Transportation; WA DAHP = Washington State Department of Archeology and Historic Preservation; WA DOE = Washington State Department of Ecology; SP = City of Port Angeles Strategic Plan 2017-2018; AIA = American Institute of Architects

DRAFT



C= Complete
 O= Ongoing
 N = Not Complete



Measurable Actions

Number	Action	Short (0-2 yr.)	Medium (2-4 yr.)	Long (4+ yr.)	COPA	CLC	POPA	LEKT	Other	Action / Metric	Deliverable Date	Complete
A-4.11 (SP)	Transportation Benefit District on ballot	■			-					Ballot Measure	August 31, 2017	C
Housing												
A-6.01	Identify appropriate areas of the city for higher-density housing, converting low-density residential areas into medium and high-density designations.		■		-					List / Map Areas for Upzone	December 31, 2019	O
A-6.02	Evaluate revisions to height limitations in all commercial, medium, and high-density zones, helping accommodate increased residential densities without impacting viewsheds.		■		-					Ordinance Passed	December 31, 2020	O
A-6.03 (SP)	Align Municipal Code for high density development zones.	■			-					Amending Ordinance Passed	March 31, 2017	O
A-6.04 (SP)	Partner with the Port Angeles Downtown Association to promote 2nd Story and above residential occupancy downtown	■			-				PADA	List / Map Available	March 31, 2018	C
A – 6.05 (HAP)	Pursue partnership for a demonstration project that will provide: <ul style="list-style-type: none"> • A catalytic mixed-use project with affordable units. • A demonstration project to create a mixed-use prototype for market rate and affordable units in the downtown, medical center, commercial and/or residential neighborhood zones. 	■	■							Resolution Passed/Project identified	December 31, 2022	N
A – 6.06 (HAP)	Assist in the development of accessory residential units by: <ul style="list-style-type: none"> • Developing a design manual and prototypes for ARU's • Allowing the R-7 zone to increase the size of ARU's attached to primary dwelling units. • Partnering with local lenders to establish an ARDU low cost loan program. 	■	■							Amending Ordinance/ Resolution Passed	December 31, 2020	N

Abbreviations: COPA = City of Port Angeles; CLC = Clallam County; POPA = Port of Port Angeles; LEKT = Lower Elwha Klallam Tribe; WSDOT - Washington State Department of Transportation; WA DAHP = Washington State Department of Archeology and Historic Preservation; WA DOE = Washington State Department

of Ecology; SP = City of Port Angeles Strategic Plan 2017-2018; AIA = American Institute of Architects

City of Port Angeles | 4

DRAFT



C= Complete
 O= Ongoing
 N = Not Complete

Measurable Actions

Number	Action	Short (0-2 yr.)	Medium (2-4 yr.)	Long (4+ yr.)	COPA	CLC	POPA	LEKT	Other	Action / Metric	Deliverable Date	Complete
A – 6.07 (HAP)	Encourage mixed use development and affordable housing units by: <ul style="list-style-type: none"> Allowing Multi-family zones to create mixed housing type developments with internal drives (via circulation plan) as an alternative to public rights-of-way. Allow ground floor residential and convertible space in CA, CN and CSD zones. Identify Commercially-zoned properties that have multi-family capabilities on site. Amend zoning code to adjust setbacks, maximum site coverage allowances, and other restrictions that prevent the use of to expand the definition of allowable innovative, functional, and cost effective housing products. Amend zoning code to eliminate larger lot size requirement for duplexes and assess the value of incentive zoning allowance beyond existing overlay zones 	■								Ordinance Passed/ Study Completed	December 31, 2020	N
A – 6.08 (HAP)	Continue to use Housing Rehabilitation Fund to match grants, offer low-cost loans to allow homeowners meeting income guidelines to remain resident in their home, maintain the value of a home, or upgrade to increase its market value.	■	■	■						Number of grants provided	Ongoing	O
A – 6.09 (HAP)	Partner with Peninsula Housing Authority to identify and address barriers to affordable housing and funding opportunities for affordable housing projects.	■								Study completed	December 31, 2019	C
A – 6.10 (HAP)	In conjunction with local lenders and housing agencies identify rehabilitation program requirements including the potential number of housing projects, deferred or limited equity program participants, and required number and skill of renovation contractors or agents.	■								Program Adopted and Funded	December 31, 2020	N
Conservation												

Abbreviations: COPA = City of Port Angeles; CLC = Clallam County; POPA = Port of Port Angeles; LEKT = Lower Elwha Klallam Tribe; WSDOT - Washington State Department of Transportation; WA DAHP = Washington State Department of Archeology and Historic Preservation; WA DOE = Washington State Department of Ecology; SP = City of Port Angeles Strategic Plan 2017-2018; AIA = American Institute of Architects

C= Complete
 O= Ongoing
 N = Not Complete



Measurable Actions

Number	Action	Short (0-2 yr.)	Medium (2-4 yr.)	Long (4+ yr.)	COPA	CLC	POPA	LEKT	Other	Action / Metric	Deliverable Date	Complete
A-7.01	Review and update the City's Façade Improvement Program to encourage participation in streetscape beautification projects and enhancements along entryway corridors.		■		•					Amending Ordinance Passed	December 31, 2021	O
A-7.02	Develop and maintain an archaeological database, allowing for review and monitoring of ground-disturbing activities. The database should include: <ul style="list-style-type: none"> ■ Known archaeological and historical sites ■ A predictive model prescribing areas of high, medium and low archaeological site potential ■ A waterfront archaeological overlay 		■					WA DAHP	Establish Budget Item for Geographic Information Systems (GIS)	December 31, 2018	O	
A-7.03	Review and update the City's Urban Services Standards and Guidelines, including requirements for development to provide: <ul style="list-style-type: none"> ■ Dispersion, infiltration and/or retention facilities necessary to protect water quality and provide flood protection and flow control ■ LID techniques and BMPs where feasible ■ Permeable paving materials for all sidewalks where feasible. 		■		•				Amend Urban Services Standards and Guidelines	January 31, 2018	C	
A-7.04	Identify and inventory "habitats of local importance" areas, helping ensure wildlife corridors are not severed.		■		•	•			WA DOE	Produce GIS Layer / Map	December 31, 2021	N
A-7.05	Develop and maintain an inventory of wetland delineations completed as part of land use permitting.	■			•	•				Produce GIS Layer / Map	December 31, 2019	O
A-7.06	Develop and periodically update a stormwater management plan consistent with NPDES Phase II permit requirements.	■	■	■	•				WA DOE	Program Infrastructure in CFP	December 31, 2018	O

Abbreviations: COPA = City of Port Angeles; CLC = Clallam County; POPA = Port of Port Angeles; LEKT = Lower Elwha Klallam Tribe; WSDOT = Washington State Department of Transportation; WA DAHP = Washington State Department of Archeology and Historic Preservation; WA DOE = Washington State Department of Ecology; SP = City of Port Angeles Strategic Plan 2017-2018; AIA = American Institute of Architects



C= Complete
 O= Ongoing
 N = Not Complete

Measurable Actions

Number	Action	Short (0-2 yr.)	Medium (2-4 yr.)	Long (4+ yr.)	COPA	CLC	POPA	LEKT	Other	Action / Metric	Deliverable Date	Complete
A-7.07	Review and update the City's Urban Services Standards and Guidelines, including measures to coordinate new development with the protection of: <ul style="list-style-type: none"> ■ Scenic resources ■ Environmentally-sensitive areas. 		■		-					Pass Resolution / Policy Document	December 31, 2021	N
A-7.08	Develop and adopt regulations supporting the preservation of identified, historically-significant buildings and sites.	■			-			-	WA DAHP	Ordinance Passed	December 31, 2019	N
A-7.09	Develop and adopt a tree management program including: <ul style="list-style-type: none"> ■ Tree density targets ■ Urban forest management procedures and guidelines. 			■	-					Pass Resolution / Policy Document	December 31, 2022	N
A-7.10	Update the City's Shoreline Master Program by 2024.			■	-					Ordinance Passed	June 30, 2020	O
Capital Facilities												
A-8.01	Update the City's Capital Facilities Plan on an annual basis.	■	■	■	-					Ordinance Passed	December 31, 2017	O
A-8.02	Develop and implement a schedule for preparation and adoption of all City service and facilities plans, coordinated with the Comprehensive Plan.	■			-					LOS Plan	December 31, 2018	O
A-8.03	Establish review procedures for capital facilities plan projects, ensuring projects address: <ul style="list-style-type: none"> ■ Endangered Species Act requirements ■ Climate change adaptability ■ PAUGA impacts ■ Established levels of service. 		■		-	-			WA DOE	Policy Document	December 31, 2020	O
A-8.04 (SP)	Deliver Capital Facilities Plan for 2018-2023	■			-					Resolution Passed	July 31, 2017	C
A-8.05 (SP)	Secure municipal and industrial water rights	■			-					Settlement Agreement	December 31, 2019	O
A-8.06 (SP)	Provide and publish year end reports for the Waterfront Improvement Plan Phase 3 Design	■			-					Report Published	December 31, 2019	O

DRAFT

Abbreviations: COPA = City of Port Angeles; CLC = Clallam County; POPA = Port of Port Angeles; LEKT = Lower Elwha Klallam Tribe; WSDOT = Washington State Department of Transportation; WA DAHP = Washington State Department of Archeology and Historic Preservation; WA DOE = Washington State Department of Ecology; SP = City of Port Angeles Strategic Plan 2017-2018; AIA = American Institute of Architects

C= Complete
 O= Ongoing
 N = Not Complete



City of Port Angeles Comprehensive Plan

11.10

Measurable Actions

Number	Action	Short (0-2 yr.)	Medium (2-4 yr.)	Long (4+ yr.)	COPA	CLC	POPA	LEKT	Other	Action / Metric	Deliverable Date	Complete
A-8.07 (SP)	Provide and publish year end reports for the Race Street Corridor Project 30% design	■			-					30% Design Published	December 31, 2019	O
A-8.08 (SP)	City Signage and Wayfinding Program - RFP and design adjustments	■			-					RFP Released	December 31, 2019	C
A-8.09 (SP)	Complete downtown, parks, and trail enhancements for Civic Field, Calisthenics Park, Georgiana Park	■			-					Enhancements Complete	December 31, 2017	C
A-8.10 (SP)	Complete downtown, parks, and trail enhancements for Hill Street Olympic Discovery Trail Project		■		-					30% Design	December 31, 2021	O
A-8.11 (SP)	Complete downtown, parks, and trail enhancements for adding amenities downtown (e.g. tables and benches)	■			-					Amenities Added	December 31, 2019	O
A-8.12 (SP)	Complete downtown, parks, and trail enhancements for Bike routes: address funding, route maps, parking obstacles	■			-					Analysis Complete	December 31, 2019	O
A-8.13 (AIA)	East entrance monument		■		-					Added to CFP	December 31, 2018	N
A-8.14 (AIA)	Expand street art program	■	■		-					Ordinance Passed	July 31, 2020	N
A-8.15 (AIA)	Replace light and signal poles in downtown with new structures at pedestrian scale		■		-					Added to CFP	July 31, 2018	C
A-8.16 (AIA)	Place overhead utilities underground			■	-					Added to CFP	July 31, 2020	O
A-8.17 (AIA)	Create public view points and overlooks along bluff above downtown		■		-					Added to CFP	July 31, 2020	O
Economic Development												
A-9.01	Negotiate a vegetation easement with the Port of Port Angeles, providing long-term resolution to concerns regarding trees at Lincoln Park.	■			-		-			Execute Easement / Interlocal Agreement	December 31, 2019	O
A-9.02	Develop policy encouraging the creation of new tourism events, enhancing tourism during the limited value season.	■			-	-	-	-	PADA	Pass Resolution	December 31, 2017	C

Abbreviations: COPA = City of Port Angeles; CLC = Clallam County; POPA = Port of Port Angeles; LEKT = Lower Elwha Klallam Tribe; WSDOT - Washington State

Department of Transportation; WA DAHP = Washington State Department of Archeology and Historic Preservation; WA DOE = Washington State Department of Ecology; SP = City of Port Angeles Strategic Plan 2017-2018; AIA = American Institute of Architects

DRAFT



C=Complete
O= Ongoing
N = Not Complete

Measurable Actions

Number	Action	Short (0-2 yr.)	Medium (2-4 yr.)	Long (4+ yr.)	COPA	CLC	POPA	LEKT	Other	Action / Metric	Deliverable Date	Complete
A-9.03	Review and update the City's Urban Services Standards and Guidelines, including: <ul style="list-style-type: none"> ■ <i>Street and parking lot tree plantings</i> ■ <i>Use of appropriate vegetation in planter strips and bio-retention facilities.</i> 		■		•					Amend Urban Services Standards	December 31, 2020	O
A-9.04	The City will support the implementation of the Mount Angeles View Project including a new Boys and Girls Club, recognizing that the overall project results in affordable housing and child care for the local workforce.	■	■		•	•				Number of Letter of Support	December 31, 2018	C
A-9.05	The City will continue to make improvements as part of the Waterfront Development Plan while providing support to abutting investments made by the Port Angeles Waterfront Center (Performing Arts Center) and Feiro Marine Life Center.	■	■		•					Number of Letters of Support, Number of Permits Issued	December 31, 2019	O
A-9.06	The City will work with Clallam County to ensure enhancements to William Shore Memorial Pool continue to provide benefits to the Port Angeles community.	■	■			•				Number of Letters of Support, Number of Permits Issued	December 31, 2019	O
A-9.07 (SP)	Provide and publish year end reports for Façade Improvement Program – present 5 applications to Planning Commission	■			•					Applications Presented	December 31, Annually	O
A-9.08 (SP)	If we continue to contract with PADA: Inventory vacant downtown commercial properties and apply Buxton study to identify needed business types.	■			•				PADA	Execute Contract	March 31, 2020	O
A-9.09 (SP)	Create plan motivating vacant property owners to upgrade buildings or lots	■			•					Plan Developed	March 31, 2020	O
A-9.10 (AIA)	Improve the downtown banners at the entries to the downtown with PADA contract	■			•				PADA	Execute Contract	December 31, 2020	O
A-9.11 (AIA)	Infill development in downtown			■	•					Added to CFP and Comp. Plan	December 31, 2022	O

A-9.12 (AIA)	National Park Center in City			■	-				New Kiosk / DT Footprint	December 31, 2022	O
A-9.13	Assess climate migration impacts with forecasting every 5 years. Integrate those findings into the Comprehensive Plan, infrastructure plans, revenue and expense forecasting, and housing assessments.			■	-				Assessment complete. Plans updated.	December 31, 202X	O

Abbreviations: COPA = City of Port Angeles; CLC = Clallam County; POPA = Port of Port Angeles; LEKT = Lower Elwha Klallam Tribe; WSDOT = Washington State Department of Transportation; WA DAHP = Washington State Department of Archeology and Historic Preservation; WA DOE = Washington State Department of Ecology; SP = City of Port Angeles Strategic Plan 2017-2018; AIA = American Institute of Architects

DRAFT

C= Complete
 O= Ongoing
 N = Not Complete



Measurable Actions

Number	Action	Short (0-2 yr.)	Medium (2-4 yr.)	Long (4+ yr.)	COPA	CLC	POPA	LEKT	Other	Action / Metric	Deliverable Date	Complete
Long-Range Financial Plan												
A-LRFP.1 (SP)	Update Long-Range Financial Plan for 2018-2023	■								Resolution Passed	December 31, 2018	C
A-LRFP.2 (SP)	Sell Nichel and Lincoln Street Properties	■			-					Execute Purchase/Sale	December 31, 2018	C
A-LRFP.3 (SP)	Sell Morse Creek property	■			-					Execute Purchase/Sale	July 31, 2020	N
A-LRFP.4 (SP)	Increase EMS utility fee to cover additional paramedic resources	■			-					Ordinance Passed	July 31, 2020	N
A-LRFP.5 (SP)	Reexamine public safety funding option for tax exempt properties	■			-					Ordinance Passed	December 31, 2020	N
CCitywide Work Plan												
CA-CWP.1 N(SP)C	Professional development plans for Council	■			-					Plans Complete	December 31, 2018	C
A-CWP.2 (SP)	Records management program - replace staff position	■			-					Position Filled	December 31, 2020	N
A-CWP.3 (SP)	Records management program - bring three departments onto ECM system	■			-					Three Depts. on ECM	December 31, 2018	C
A-CWP.4 (SP)	Deliver and support new online tools for data reporting and building permit process (public use)	■			-					Online Permitting Available	September 30, 2020	N
A-CWP.5 (SP)	Confirm Council community agenda topics and attendees	■			-					Agendas Set	September 30, 2017	C
A-CWP.6 (SP)	Education: Meet with superintendent, re: November Ballot	■			-					Meeting Complete	June 30, 2017	C

Abbreviations: COPA = City of Port Angeles; CLC = Clallam County; POPA = Port of Port Angeles; LEKT = Lower Elwha Klallam Tribe; WSDOT - Washington State Department of Transportation; WA DAHP = Washington State Department of Archeology and Historic Preservation; WA DOE = Washington State Department of Ecology; SP = City of Port Angeles Strategic Plan 2017-2018; AIA = American Institute of Architects

This page is left intentionally blank

DRAFT

