

Solving a Community Challenge

~ Through Community Stewardship ~



For the Benefit of the Community

Joint Session - May 20, 2008

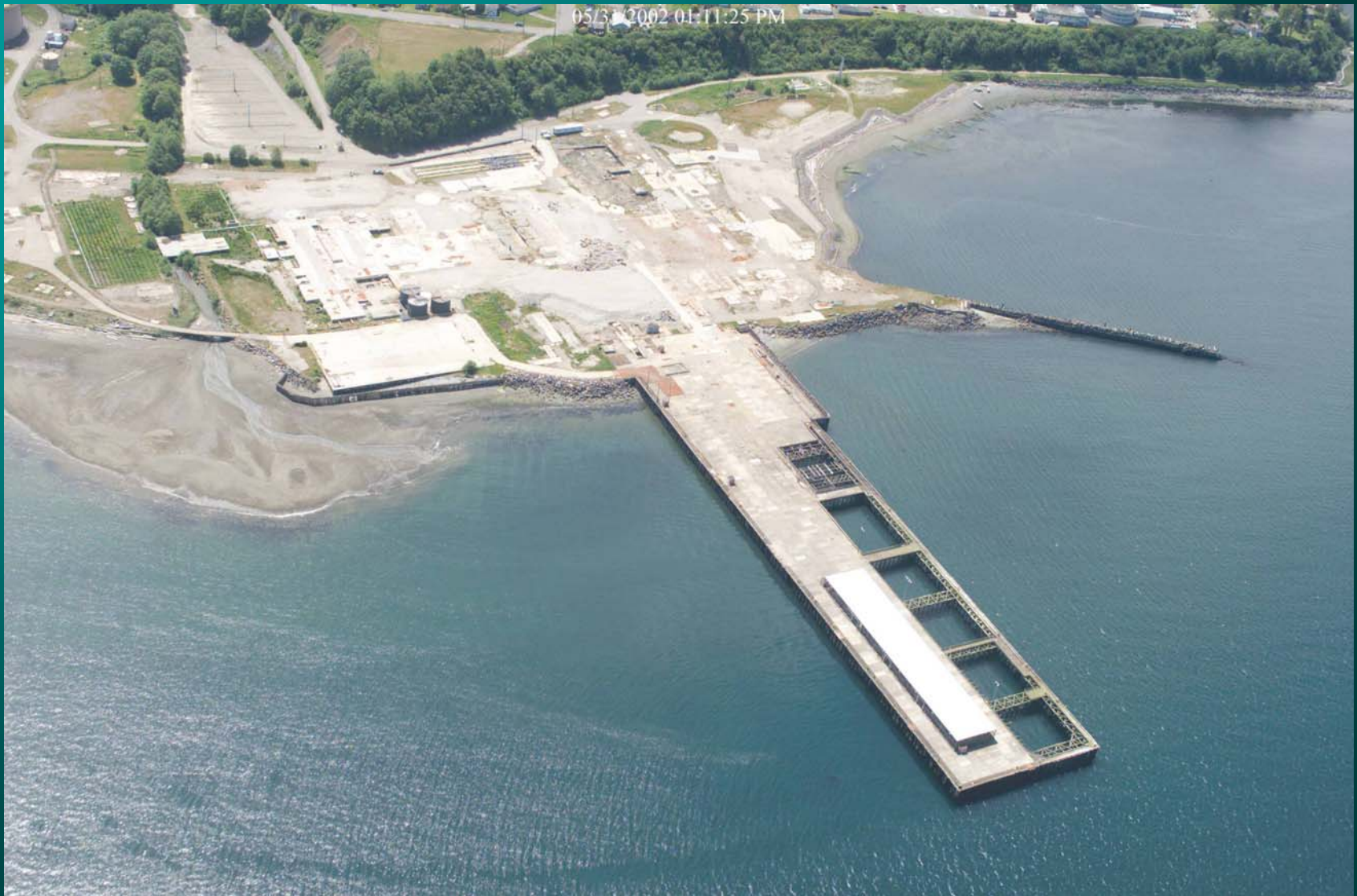
Solving a Community Challenge. . .



. . . Requires a New Perspective. . .

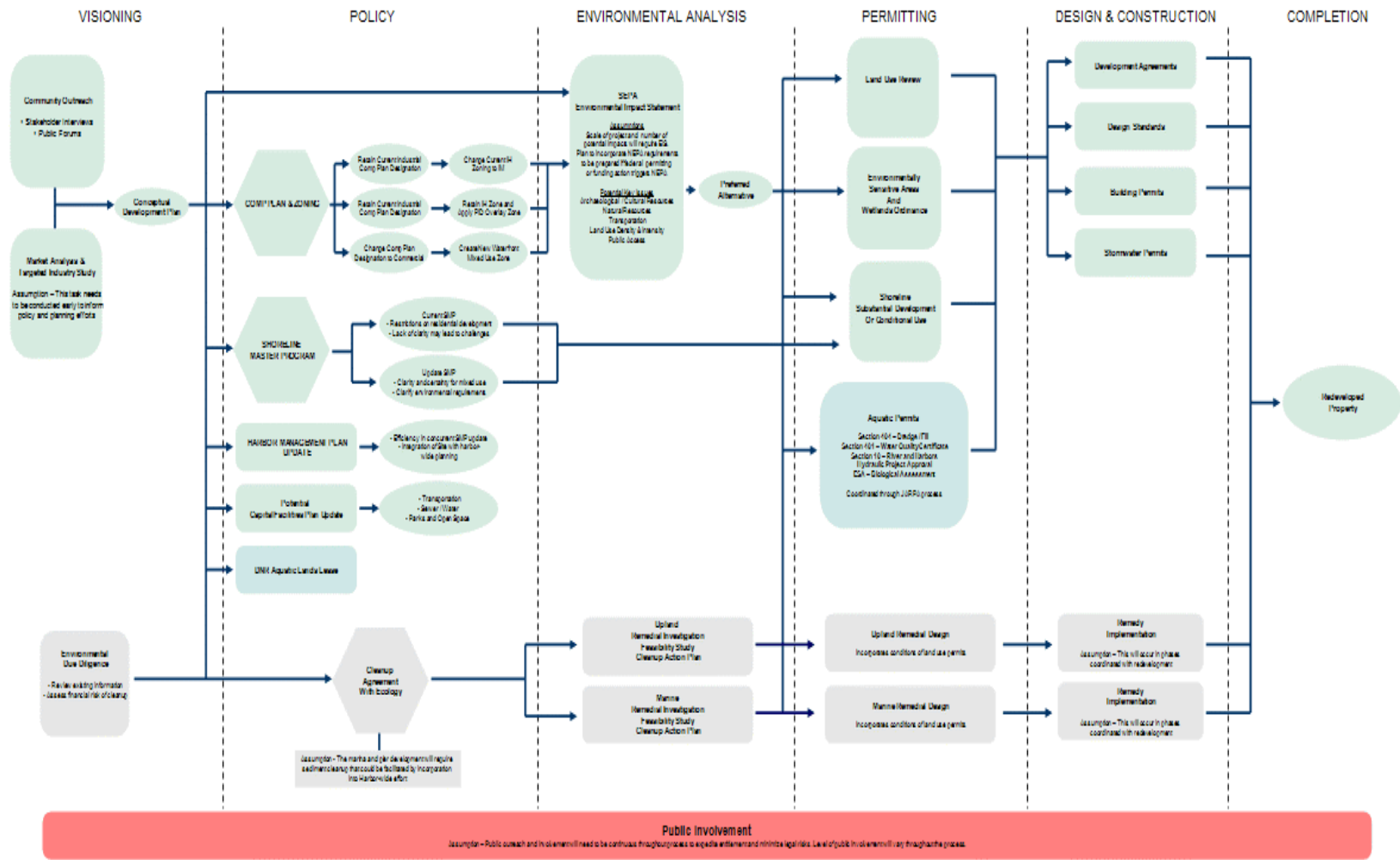
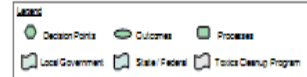


... Beginning with the Public's Vision. ...



...to move from a “Point-of-No-Return” to...

DRAFT WATERFRONT BROWNFIELD REDEVELOPMENT CRITICAL PATH ANALYSIS



... a "Turning Point" for the Community ...



... For the Benefit of the Community. . .

.. NOT for the profit of the Port or the City.

Solving a Community Challenge

- New Approach
- New Partnership
- Community Stewardship
- Commitment



... Requires a New Perspective. ...

Solving a Community Challenge

To ensure that site cleanup and redevelopment occurs in a timely, efficient and cost-effective manner while maintaining good stewardship of our environment.



. . . Requires a New Perspective. . .

Solving a Community Challenge

- Scientific Innovation
- Advanced Educational Opportunities
- Community Involvement



... Requires a New Perspective. ...

Solving a Community Challenge

The Process this Evening:

- Resolutions
- Interlocal Agreement
- Ordinance



... Requires a New Perspective. ...

Solving a Community Challenge

Resolutions

City and Port agree it is in best interest of the community that they participate.



... Requires a New Perspective. ...

Solving a Community Challenge

Interlocal Agreement

Brings the powers of the City and the Port into alignment to take on this stewardship.



. . . Requires a New Perspective. . .

Solving a Community Challenge

Port Angeles Harbor-Works Development Authority (PDA)

- A public corporation created and authorized to exercise both City and Port powers.



. . . Requires a New Perspective. . .

Solving a Community Challenge

PA Harbor-Works Tasks:

- Remediation & Redevelopment of Rayonier Site
- Facilitate shoreline and harbor planning
- Remediation for toxic substances in Harbor



... Requires a New Perspective. ...

Solving a Community Challenge

Board Members

- Five civic and business leaders
- NOT elected or agency officials, or agency employees



. . . Requires a New Perspective. . .

Solving a Community Challenge

- Clean Up Plan
- Site Redevelopment
- Restoration & Protection of Ennis Creek & Marine Environment
- Extensive Citizen Involvement & Outreach



. . . Requires a New Perspective. . .

Solving a Community Challenge

Work with private, State and Federal funding partners to leverage local resources to address harbor-wide issues.



. . . Requires a New Perspective. . .

Solving a Community Challenge

A Collaborative Community Research & Educational Partnership:

- Battelle Memorial Institute
- Pacific Northwest National Laboratory
- Peninsula College
- Clallam Economic Development Council

Comprising the North Olympic Peninsula
Innovation Partnership Zone (IPZ)



And...Other Potential
Community Partnerships

... Requires a New Perspective. ...

Solving a Community Challenge

This opportunity will create an innovative and community-based approach to solving one of our community's biggest issues.



. . . Requires a New Perspective. . .

. . .Clean up and redevelopment of the former mill site and the Port Angeles Harbor. . .

Solving a Community Challenge

A new model for
community-based solutions
throughout the Puget Sound
region.



. . . Requires a New Perspective. . .

Solving a Community Challenge. . .



. . . Requires a New Perspective. . .

Solving a Community Challenge

... Much work remains to be done. ...



~ Our “Turning Point” Towards Opportunity ~

Through Community Stewardship

~ Restoration, Protection and Redevelopment ~



~ For the Benefit of the Community ~