



City of Port Angeles  
Clallam County Fire District #2

*Operations – Where the  
rubber meets the road!*



Presented By:  
Ken Dubuc, PAFD  
Mike Oakes, CCFD #2

November 19, 2009



# Our Primary Mission

- Ensure the timely deployment of appropriate resources to the scene of emergencies
  - Whether fire or EMS, the public expects us to respond to every call in a timely manner
    - The first call or the third call
- Our objective is to accomplish this at the same level, for the same cost, throughout the combined area



# Fire Service Delivery

- Currently, there is a difference in the level of service that is provided in our area
  - Both in fire and in EMS

## City Fire Incident

### ***Immediate career response***

- Volunteer & off-duty career backup
- Mutual aid backup

## CCFD #2 Fire Incident

### ***Volunteer response***

- Mutual aid backup



# EMS Service Delivery

## City EMS Incident

### ***Career response***

- ALS response
  - 2 layers 24/7
  - Transport by PAFD
  - Dedicated 9-1-1
- BLS response
  - Olympic ambulance transport, when available
    - PAFD if not
- Additional calls handled by volunteer and off-duty career

## CCFD #2 EMS Incident

### ***Volunteer response***

- ALS response
  - Olympic Ambulance transport, when available
  - Volunteer medics if needed
- BLS response
  - Olympic ambulance transport, when available
    - Available approx. 80%
    - CCFD #2 if not
- Additional calls handled by volunteers



## Why Consolidate?

- From an operational perspective, we have shown there is a disparate level of service
- Previously, we mentioned that CCFD #2 has reached a point where career staff is needed to meet their operational demands
- PAFD has reached a point that additional staff is needed to meet their existing demand

***The best, most efficient, way to meet these needs is to consolidate***



# Community Fire Response “System”

- Provide 2 in – 2 out
  - L & I requirement
  - Immediate response
- Full assignment capabilities
  - 14/15 firefighters
    - Numerous fireground operations carried out simultaneously
    - Dictated by national standard (NFPA)
  - Reasonable response
- Strong mutual aid agreements
  - For infrequent extraordinary events
  - Longer response



# Fire Incident Staffing

- 1 - Incident Commander
- 1 - Pump operator
- 2 - Fire fighters on attack lines
  - 1 - Fire fighter for attack line support
- 2 - Fire fighters on backup lines
  - 1 - Fire fighter for backup line support
- 2 - Fire fighters for search and rescue
- 2 - Fire fighters for ventilation
- 2 - Fire fighters to serve as rapid intervention team
- 14 - Total if aerial device not in operation
  - 1 - Aerial device operator
- 15 - Total if aerial device is operational



# Community EMS Response "System"

- Dedicated ALS 9-1-1 response
  - Immediate response
  - Multiple layers for over-lapping calls
- 9-1-1 BLS response
  - Reasonable response
- Local inter-facility transports
  - Reasonable response / some scheduled
- Out-of-town inter-facility transports
  - Reasonable response / some scheduled
  - Long out of service times



# EMS Incident Staffing

- Why we send a fire engine with the ambulance to an EMS call
  - Extrication if needed (vehicle accident)
  - Patient handling
    - Additional patient care
      - Vitals, hx, equipment setup, etc.
    - Packaging
  - National standards recommend a min. of 4 personnel at calls requiring ALS interventions
    - For best outcomes
    - 2 paramedics and 2 EMTs (NFPA)
    - A serious ALS call can require additional personnel



# EMS Incidents

- These incidents involve a number of factors
  - Dispatch
  - Response
  - Treatment
  - Transport
- There is a cost involved in all of these. The only component that is reimbursable is transport



# Proposal

- Consolidate
  - Staff a second station
    - Staff a third station a percentage of the time
  - Add 7 to 8 firefighter/EMS positions
    - These are dual role personnel able to respond to all types of incidents
    - In addition, these personnel would provide support services such as:
      - Fire inspections
      - Public education
      - Technical rescue

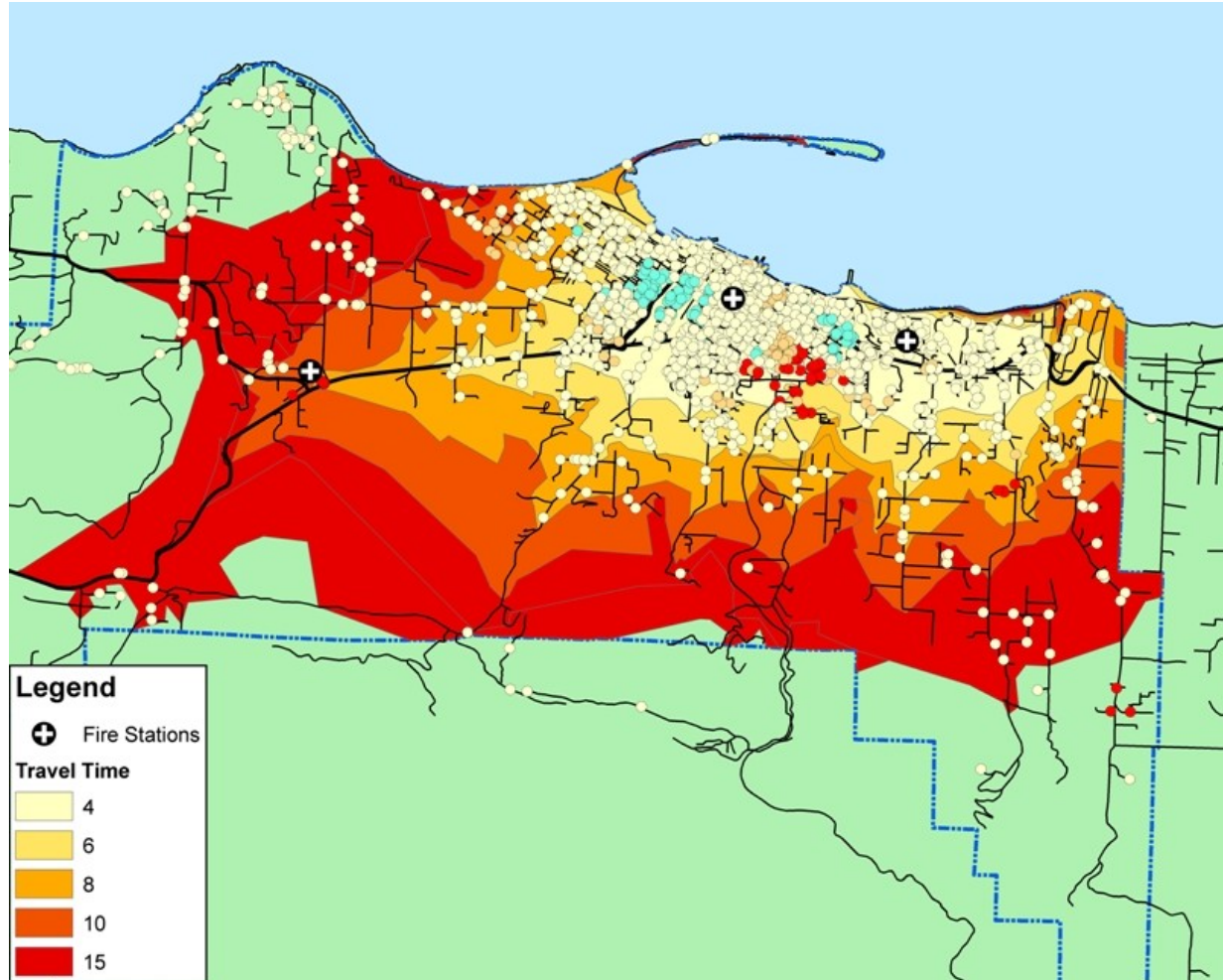


## Benefits

- Provides 3 layers of *dedicated* immediate ALS 9-1-1 response throughout the consolidated area
- Provides a second staffed station for a more efficient, effective response
- Consistent, timely response throughout the jurisdiction

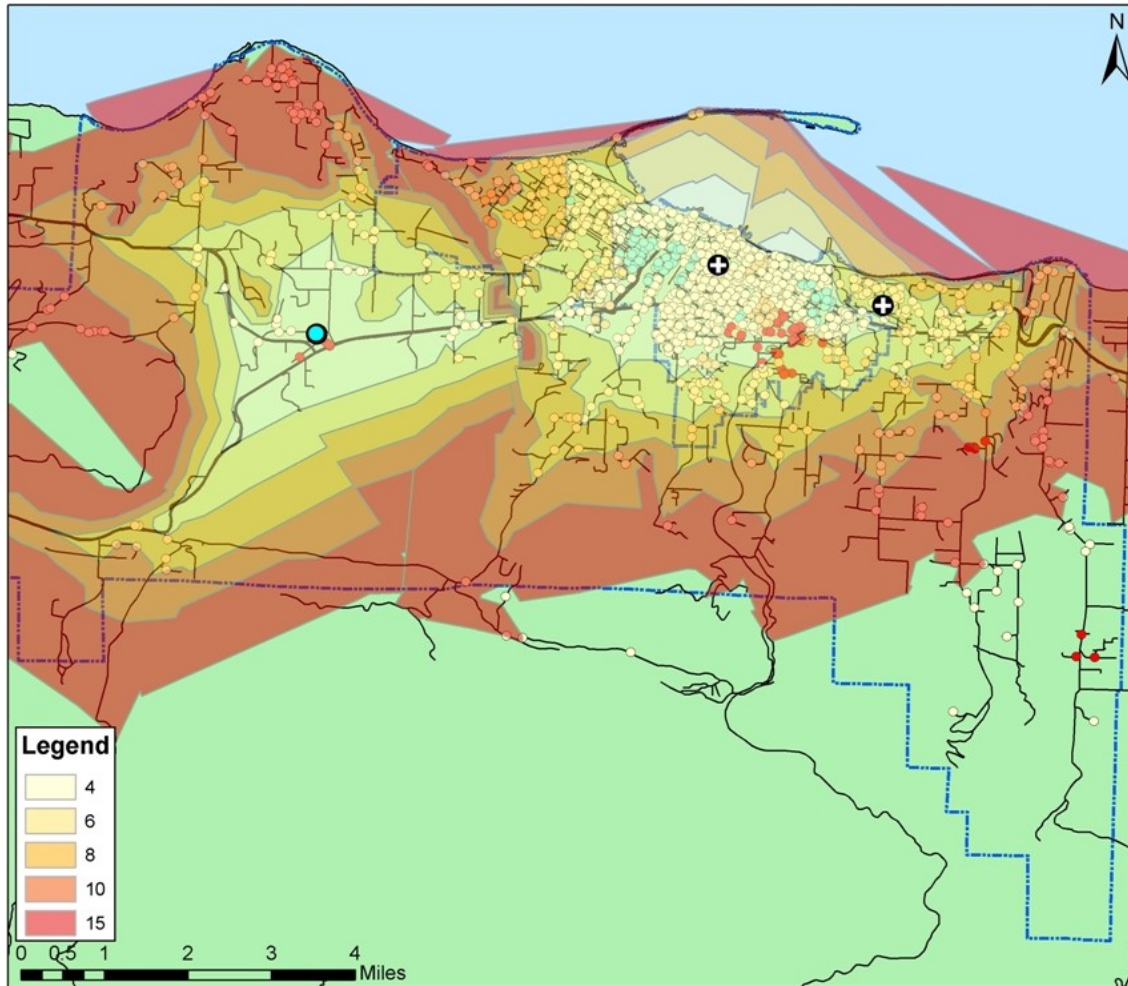


# Consolidated Response Area





# Consolidated Response Area





# Consolidated Service Delivery

## Fire Incident

### ***Immediate career response***

- Volunteer and off duty career back-up
- Mutual aid if needed

## EMS Incident

### ***Career response***

- ALS response
  - 3 layers 24/7
    - Olympic Ambulance backup
    - Dedicated 9-1-1
- BLS response
  - Olympic ambulance transport, when available
    - Consolidated agency if not
- Additional calls handled by volunteer and off-duty career



# Our Primary Mission

- Outcomes
  - Faster response times
    - More efficient personnel allocation
  - Paramedic services available a greater % of time
  - Closer to meeting nationally recognized standards for both fire and EMS
    - More effective operations
    - Better outcomes
    - Improved firefighter safety
  - Likely improvement in WS&RB rating



# Questions ?